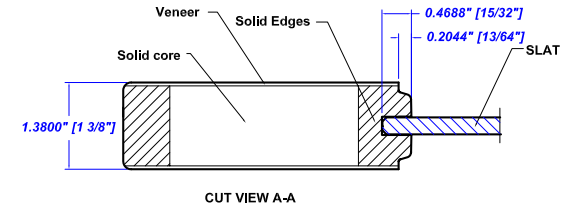
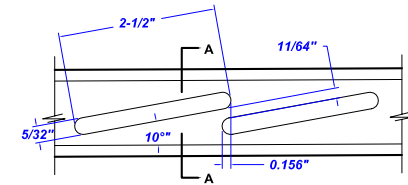
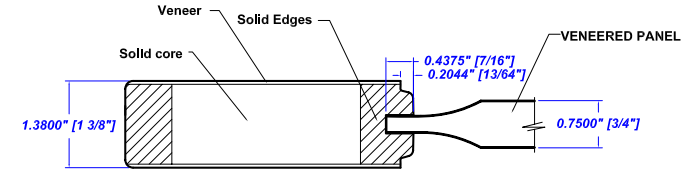
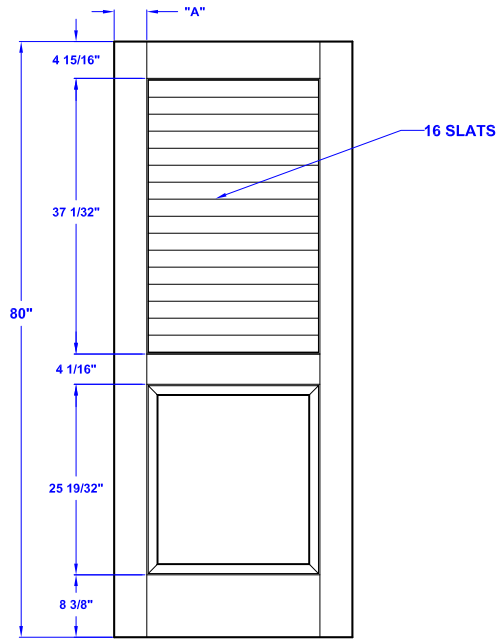
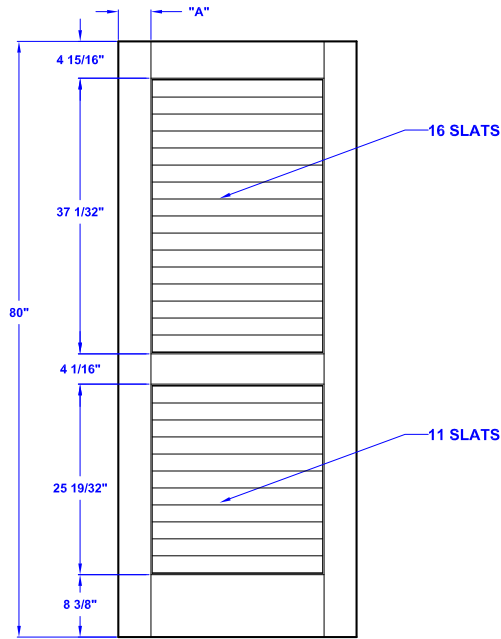


Door width	12" to 18"	20" to 22"	24" to 36"
stile width "A"	2-1/16"	3-1/16"	4-3/8"



Specification sheet

Title Full & Half Plantation Louver door

Height **80"**

Creation date
2009-july-10

Prep. by: J.C.

Revision date Rev.

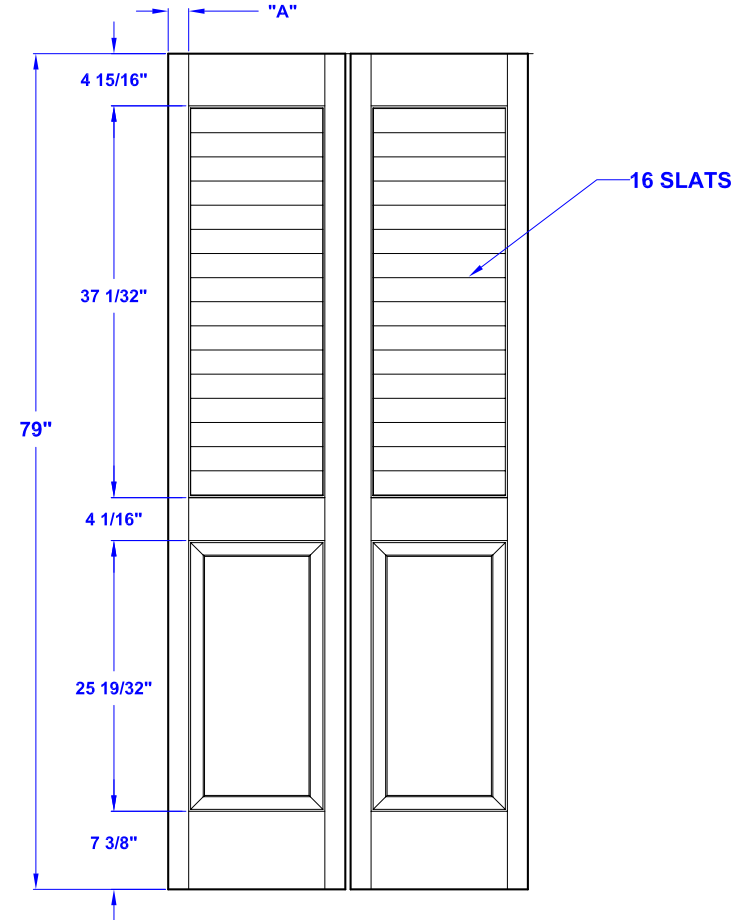
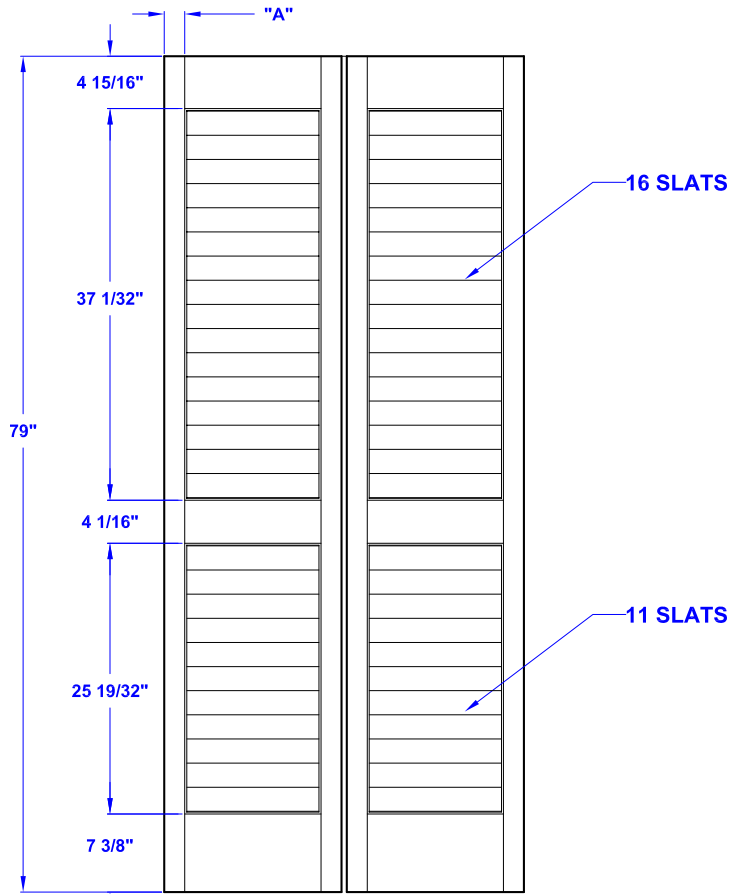
Scale nts



Masonite International Corporation
STILE & RAIL DIVISION

180-04

Door width	24" to 36"
stile width "A"	1-15/16"



+ 1 " for hardware
Finished opening required: 80 3/4 "

Specification sheet

Title
Full & Half Plantation Bi-Fold Louver door

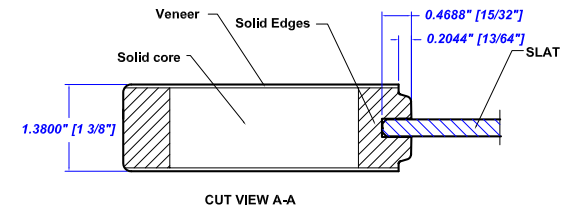
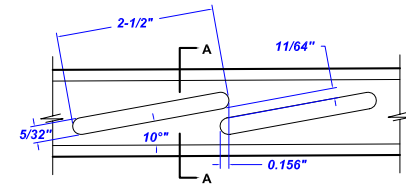
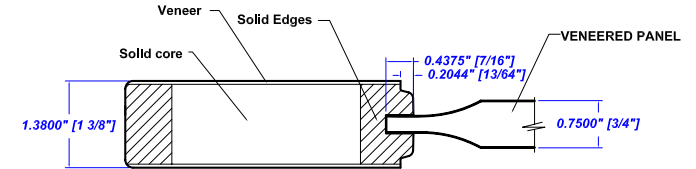
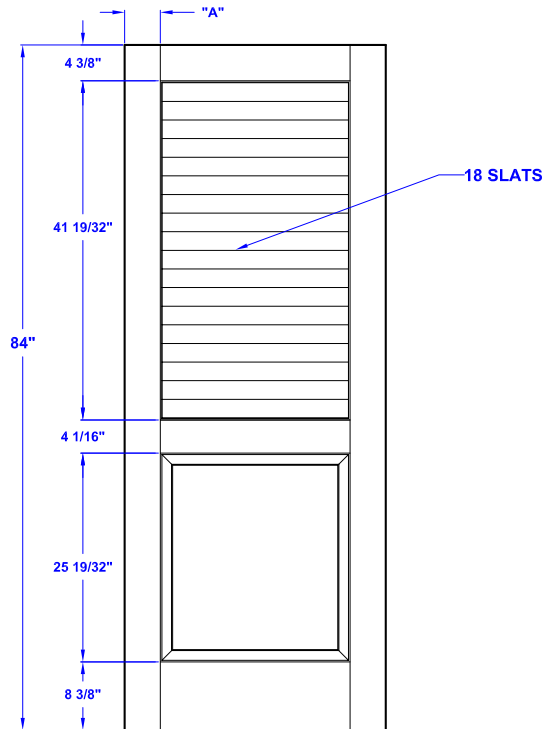
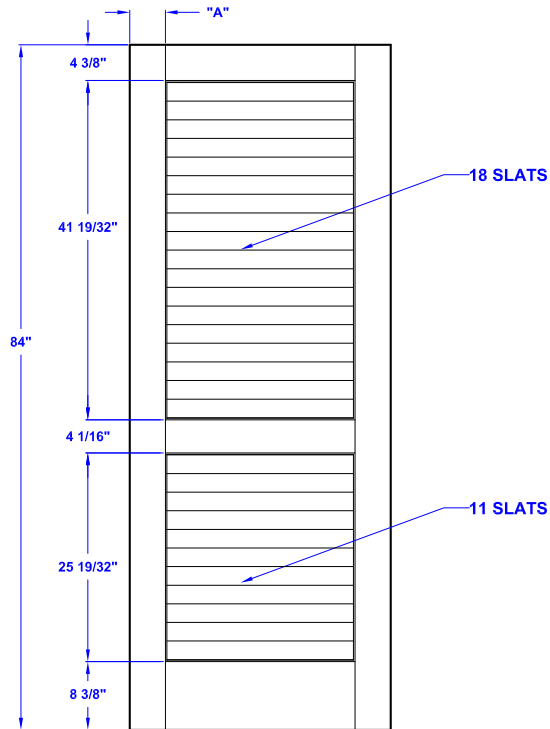
Height
80"

Creation date 2009-Sept-23	
Prep. by: François Lemoine	
Revision date	Rev.
Scale nts	

 **Masonite®**
Masonite International Corporation
STILE & RAIL DIVISION

180-05

Door width	12" to 18"	20" to 22"	24" to 36"
stile width "A"	2-1/16"	3-1/16"	4-3/8"



Specification sheet

Title Full & Half Plantation Louver door

Height
84"

Creation date
2009-August-24

Prep. by: F.L.

Revision date Rev.

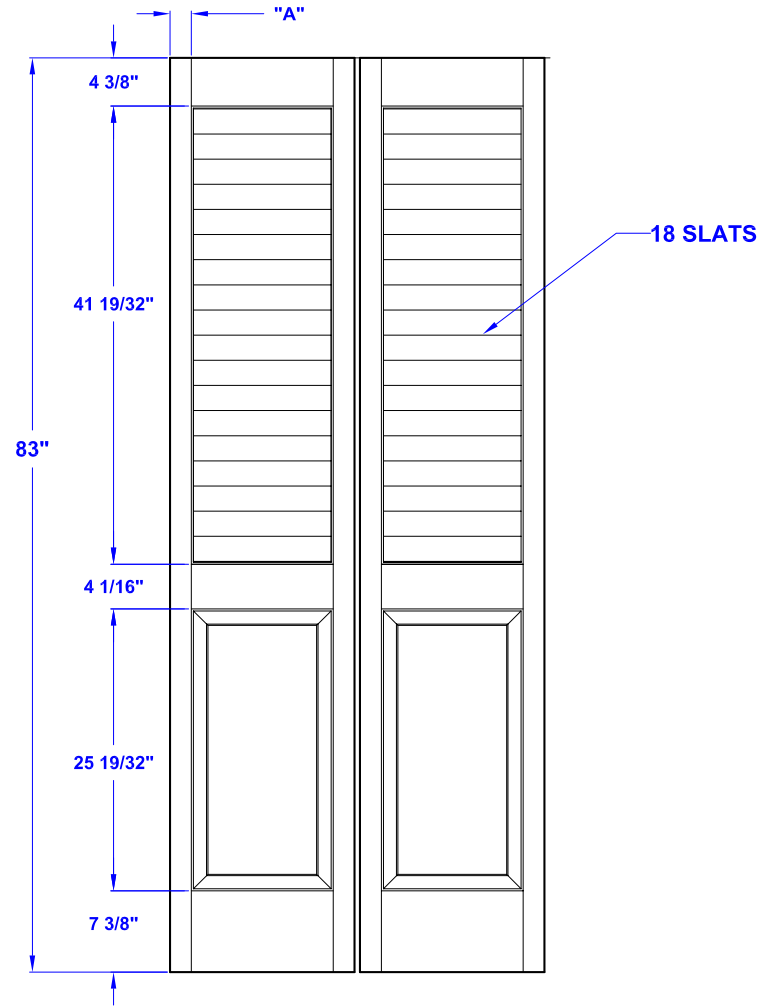
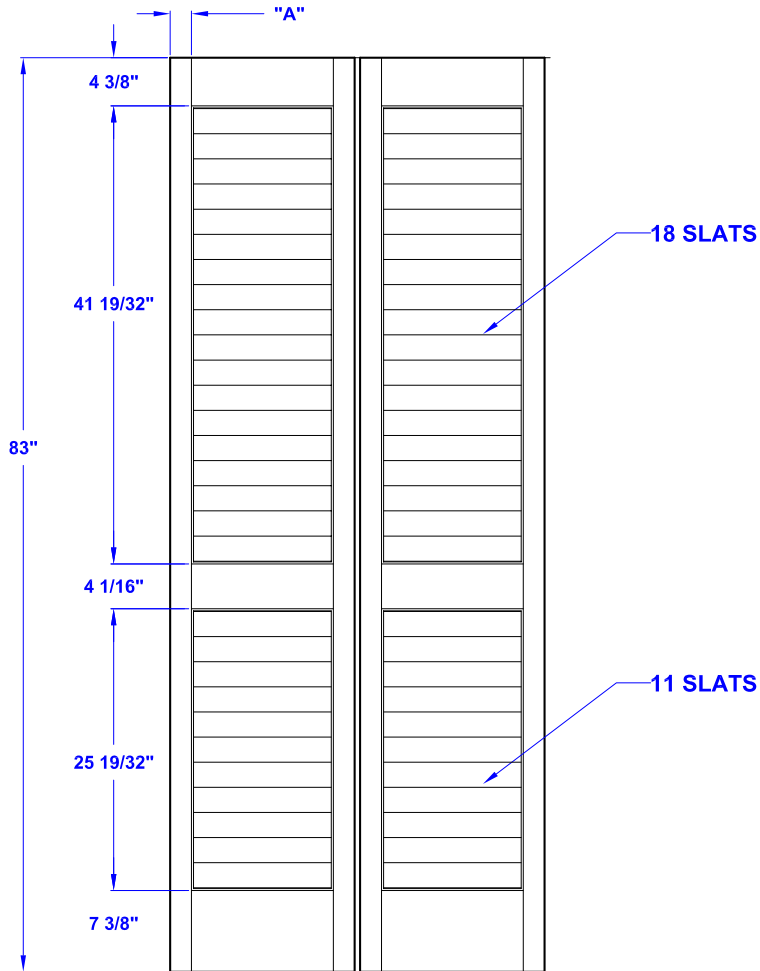
Scale nts



Masonite International Corporation
STILE & RAIL DIVISION

184-04

Door width	24" to 36"
stile width "A"	1-15/16"



+ 1 " for hardware
 Finished opening required: 80 3/4 "

Specification sheet

Title
 Full & Half Plantation Bi-Fold Louver door

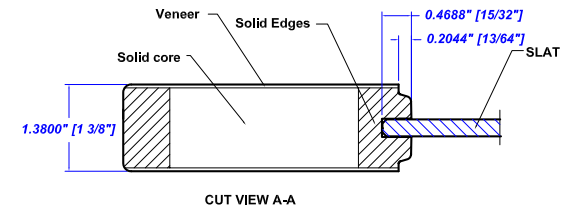
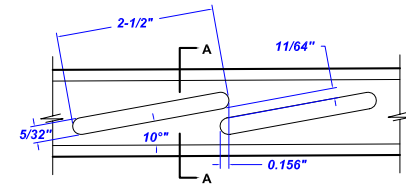
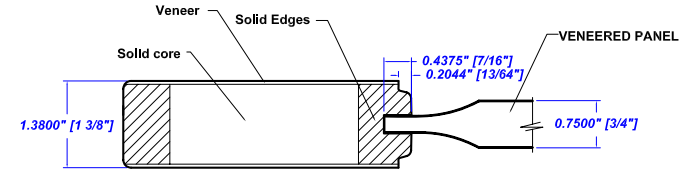
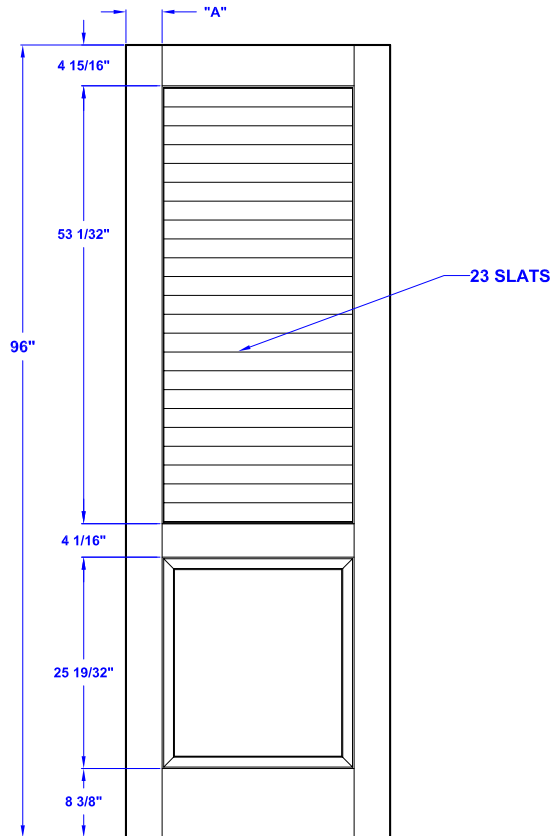
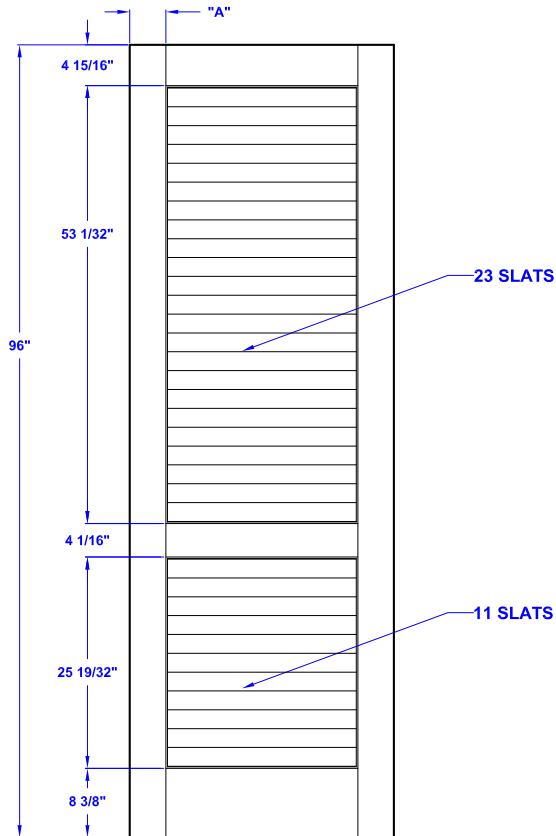
Height
84"

Creation date 2009-Sept-23	
Prep. by: F.L.	
Revision date	Rev.
Scale nts	

 **Masonite®**
 Masonite International Corporation
 STILE & RAIL DIVISION

184-05

Door width	12" to 18"	20" to 22"	24" to 36"
stile width "A"	2-1/16"	3-1/16"	4-3/8"



Specification sheet

Title Full & Half Plantation Louver door

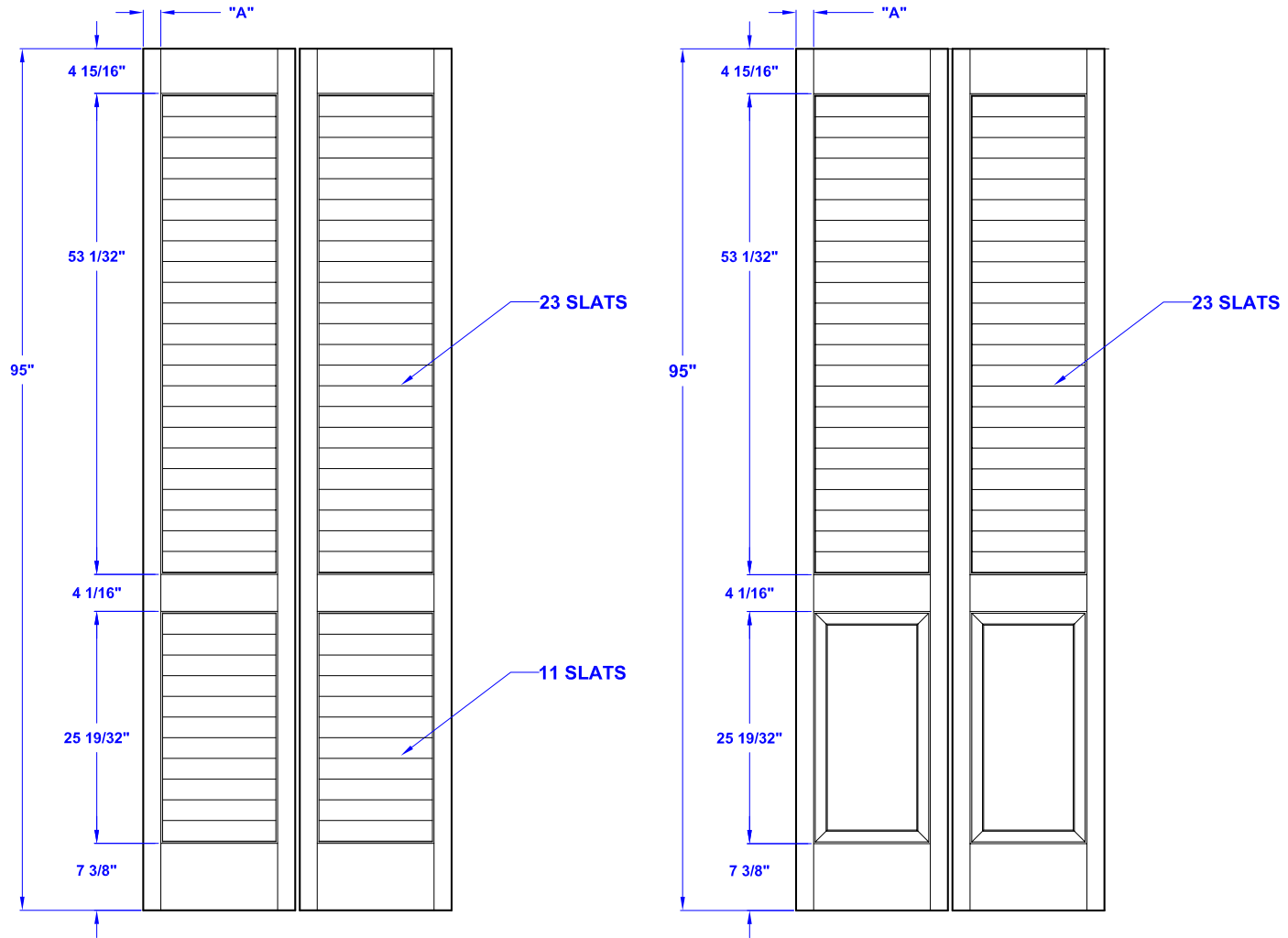
Height **96"**

Creation date 2009-August-24	
Prep. by: F.L	
Revision date	Rev.
Scale nts	

 **Masonite®**
Masonite International Corporation
STILE & RAIL DIVISION

I96-04

Door width	24" to 36"
stile width "A"	1-15/16"



+ 1 " for hardware
 Finished opening required: 80 3/4 "

Specification sheet

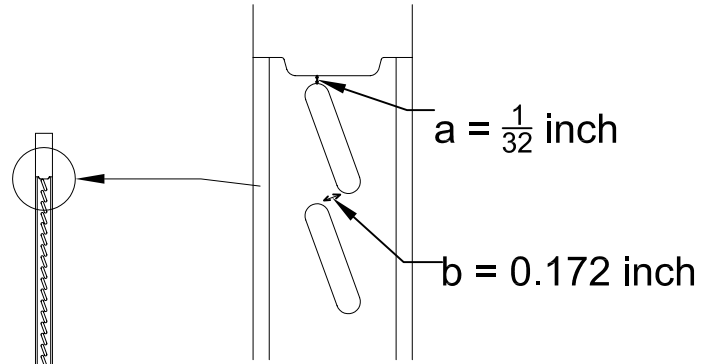
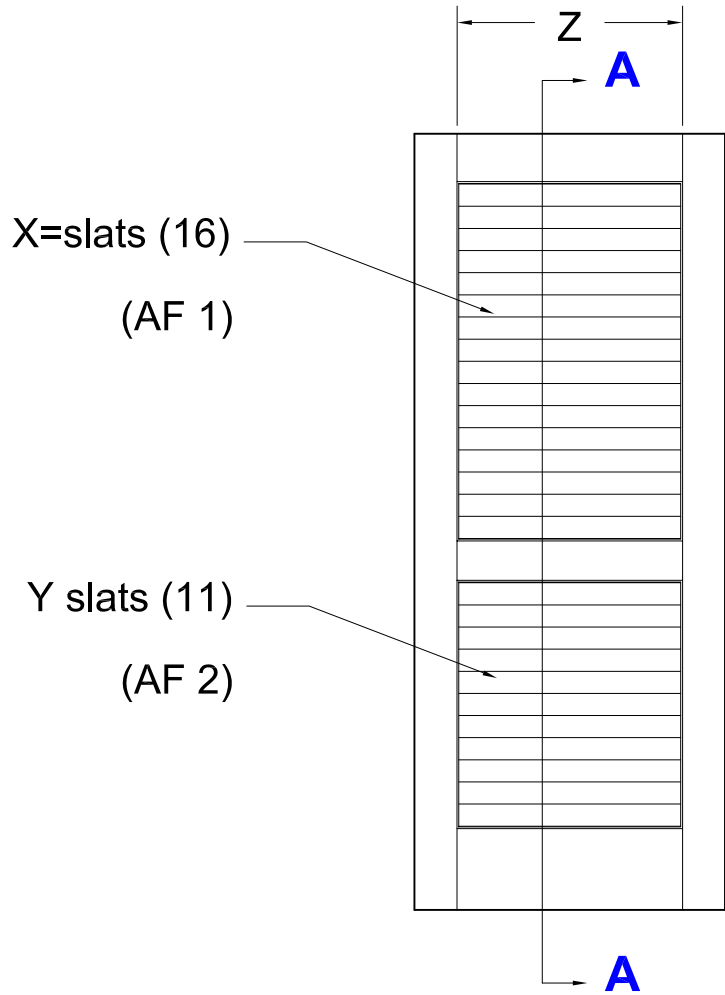
Title
 Full & Half Plantation Bi-Fold Louver door

Height
96"

Creation date 2009-Sept-24	
Prep. by: F.L	
Revision date	Rev.
Scale nts	



196-05



Total Air flow = AF 1 + AF 2
(Square inches)

$$AF 1 = (2*a + (X-1)*b) * Z$$

$$AF 2 = (2*a + (Y-1)*b) * Z$$

Air flow calculations (sq. inchs for 80 " louver door)

door	Z	Half louver	Full louver
12 "	7 7/8 "	20.810	34.847
14 "	9 7/8 "	26.099	43.707
16 "	11 7/8 "	31.386	52.559
18 "	13 7/8 "	36.672	61.411
20 "	13 7/8 "	36.672	61.411
22 "	15 1/4 "	40.301	67.497
24 "	15 1/4 "	40.301	67.497
26 "	17 1/4 "	45.592	76.349
28 "	19 1/4 "	50.878	85.200
30 "	21 1/4 "	56.164	94.052
32 "	23 1/4 "	61.450	102.905
34 "	25 1/4 "	66.736	111.757
36 "	27 1/4 "	72.022	120.609

Cut view AA

PROJECT
Louver Plantation

SUBJECT
Air Flow calculations

Drw by
Jean Couturier
Scale
1:1
File name
AF 1.dwg

Creation date
09-07-10
Revision date
09-01-13
Edition
0



Drw. No
AF 2
Rev.No