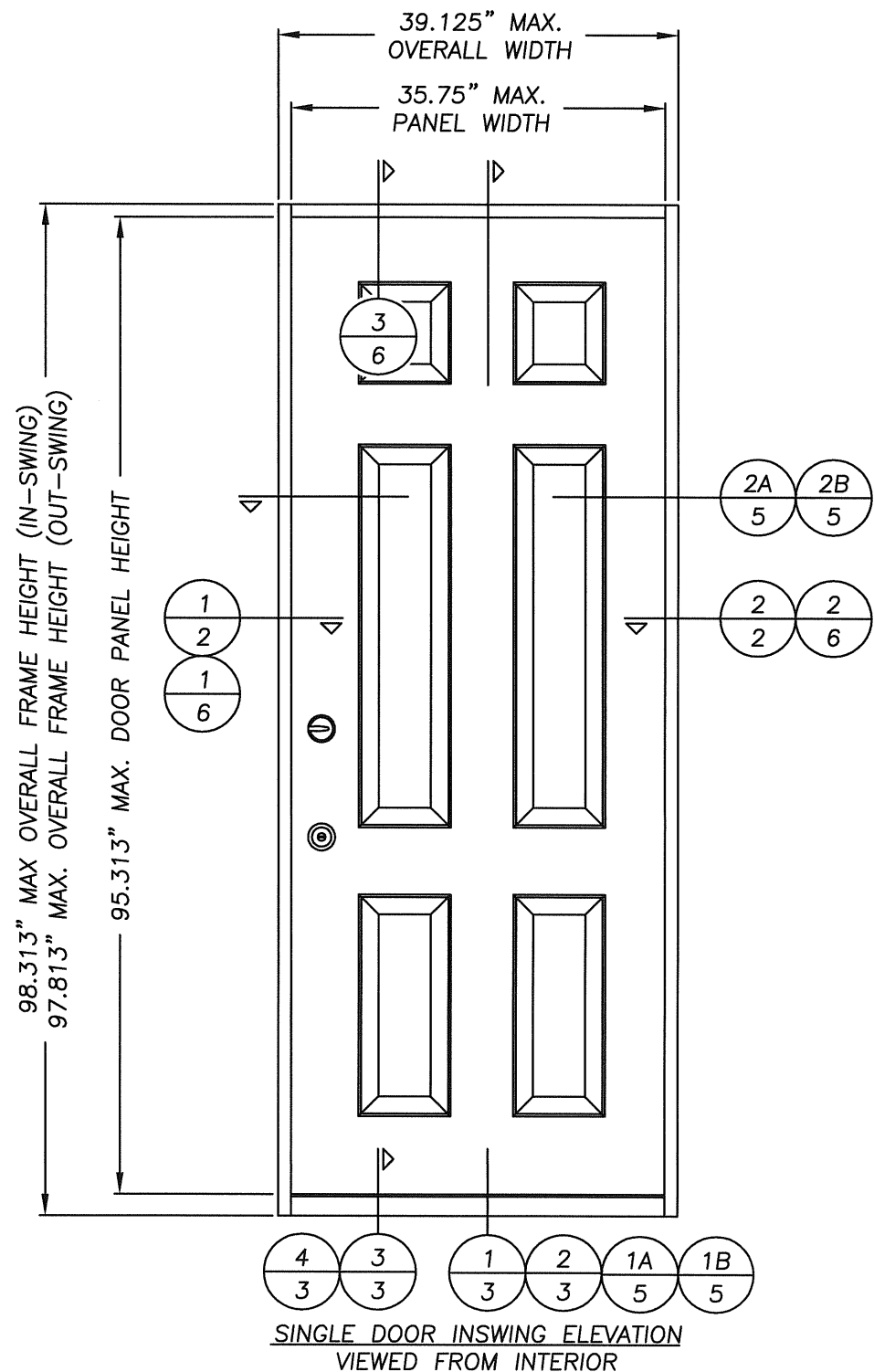


Masonite "EXTERIOR DOOR PRODUCTS"

METAL - EDGE STEEL DOOR
IN A
"FAST FRAME"
2 - PIECE ADJUSTABLE STEEL FRAME
IN-SWING / OUT-SWING
3'0 X 8'0

GENERAL NOTES

1. This product anchoring drawing has been developed in compliance with the 2004/2007 florida building code including the "High Velocity Hurricane Zone". See Certification Agency Certificate for product description, product rating and specifications.
2. Product anchors shall be as listed and spaced as shown on details. anchor embedment to base material shall be beyond wall dressing, stucco, foam, brick and other wall coverings.
3. Wood screws shall be installed following installation instructions of ANSI/AF&PA NDS 2001. All other fastener types to be installed following fastener manufacturer's installation instructions.
4. Fastener embedment depths, edge distances and center-center distances shall be as specified by the fastener manufacturer but in no instance shall they be less than shown in this drawing.
5. Where shims are used, they must be a "rigid/stiff" material that complies with the requirements of the florida building code.
6. Positive and negative design pressure requirements for use with this drawing shall be determined by others for specific jobs in accordance with the governing code.
7. Site conditions not covered by this drawing are subject to further engineering analysis.



DESIGN PRESSURE RATINGS SINGLES (PSF)

OVERALL FRAME DIMENSION	OVERALL PANEL DIMENSION	TYPE THRESHOLD	POSITIVE	NEGATIVE
39.125" x 98.313"	35.75" x 95.313"	SADDLE (IS)	+55.0 PSF	-55.0 PSF
39.125" x 97.813"	35.75" x 95.313"	BUMP (OS)	+55.0 PSF	-55.0 PSF
39.125" x 97.813"	35.75" x 95.313"	ADA (IS/OS)	+55.0 PSF	-55.0 PSF
39.125" x 97.813"	35.75" x 95.313"	ADA BUMP (OS)	+55.0 PSF	-55.0 PSF

TABLE OF CONTENTS	
SHEET #	DESCRIPTION
1	TYPICAL ELEVATIONS, DESIGN PRESSURES & GENERAL NOTES
2	HORIZONTAL CROSS SECTIONS
3	VERTICAL CROSS SECTIONS
4	HORIZONTAL AND VERTICAL CROSS SECTIONS
5	BUCK AND FRAME ANCHORING
6	VERTICAL AND HORIZONTAL CROSS SECTION W/ STEEL STUD BUCK
7	BILL OF MATERIALS & COMPONENTS

Documents Prepared By:
RW BUILDING CONSULTANTS, INC.
 P.O. Box 230 Vairico FL 33595
 Phone No.: 813.659.9197
 Florida Board of Professional Engineers
 Certificate Of Authorization No. 9813
 Wendell W. Haney P.E. No. 54158
 2-15-08

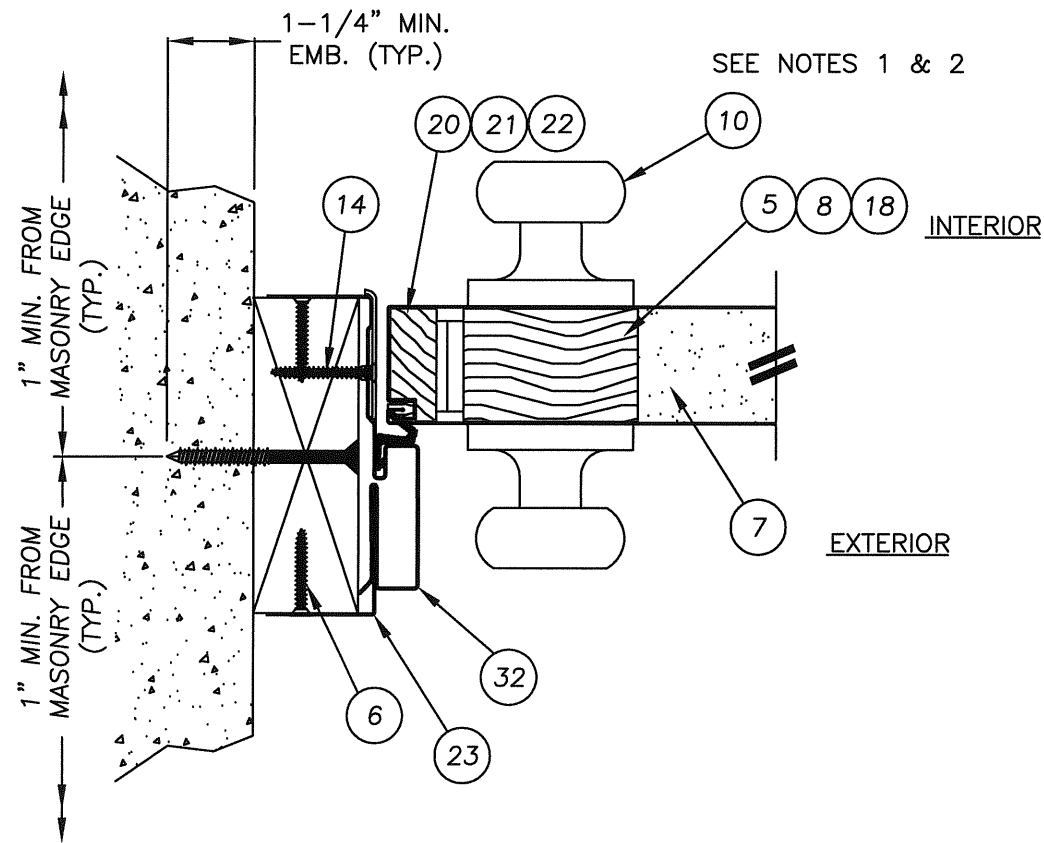
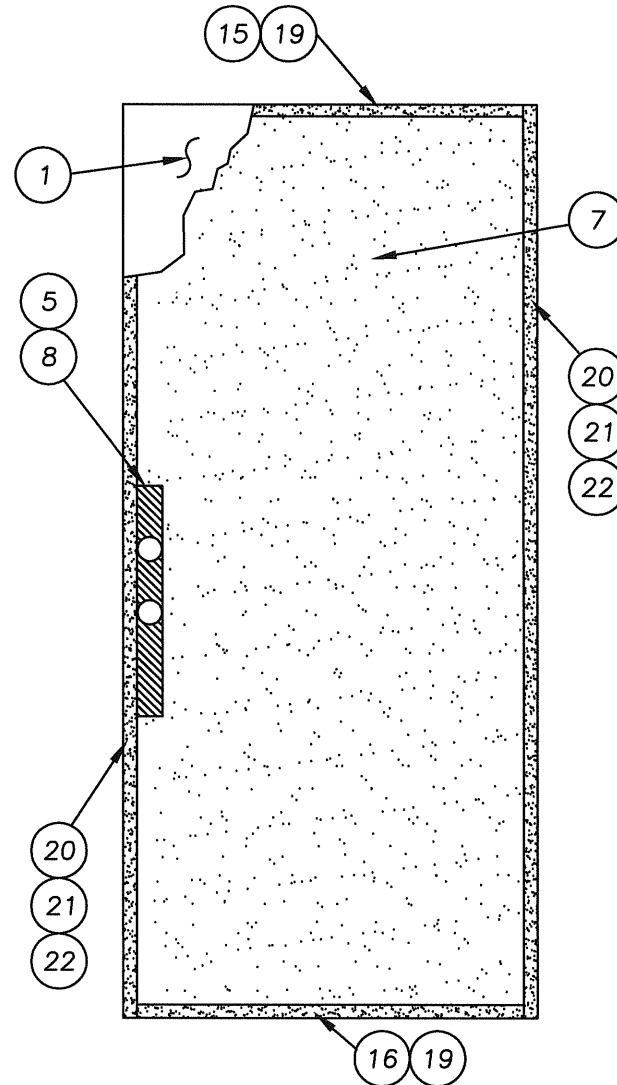
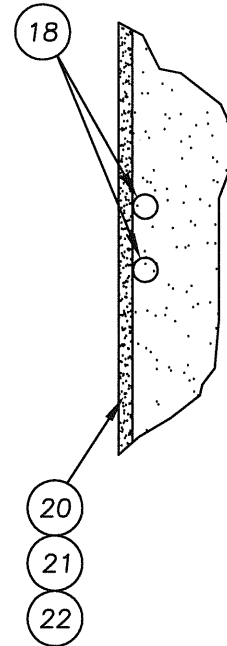
PRODUCT: METAL - EDGE STEEL DOOR
 2-PIECE ADJUSTABLE STEEL FRAME
 SINGLE 3'0 x 8'0 IS / OS
 PART OR ASSEMBLY:
 TYPICAL ELEVATIONS, DESIGN PRESSURES & GENERAL NOTES

NO.	DATE	WH	BY	REVISIONS
4	2/15/08	ADD STEEL STUD BUCK		

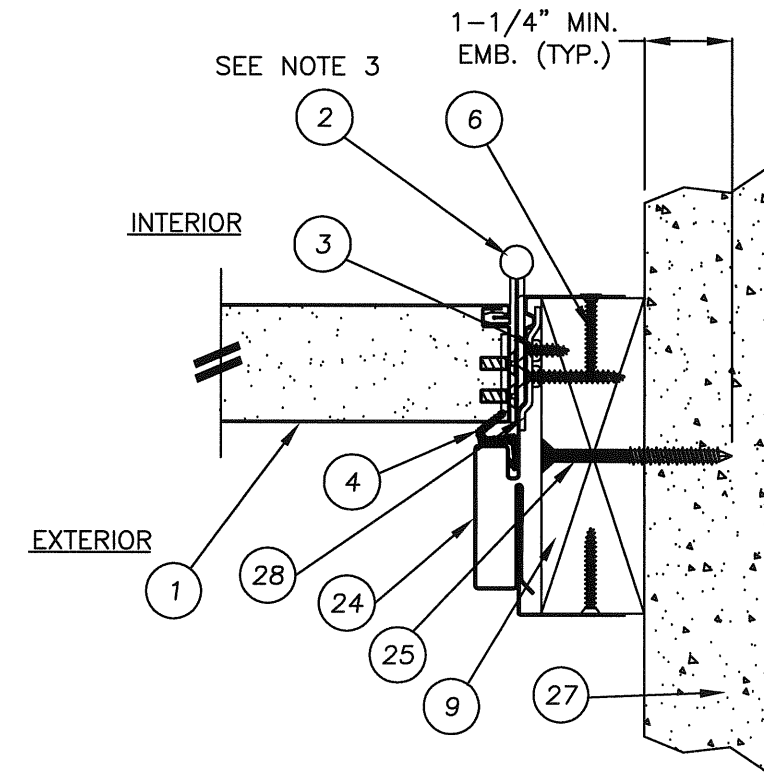
DATE: 2/22/05
 SCALE: N.T.S.
 DWG. BY: RAH
 CHK. BY: WWH
 DRAWING NO.: FL-449
 SHEET 1 OF 7

NOTES: (FOR 2X INSTALLATIONS)

1. STRIKE FOR CYLINDRICAL LOCK ATTACHED TO DOOR FRAME WITH (2) #8 X 3/8" FLAT HEAD MACHINE SCREWS.
2. STRIKE FOR DEADBOLT ATTACHED THROUGH DOOR FRAME INTO SUB-BUCK WITH (2) #8 X 1-1/2" PFH WOOD SCREWS.
3. HINGE ATTACHED TO DOOR PANEL WITH (4) #10 X 1/2" PFH SCREWS AND TO DOOR FRAME WITH (3) #10 X 1/2" PFH SCREWS AND (1) #8 X 1-1/2" PFH WOOD SCREW THROUGH FRAME INTO SUB-BUCK.



1 HORIZONTAL CROSS SECTION
2 INSWING DOOR SHOWN



2 HORIZONTAL CROSS SECTION
2 INSWING DOOR SHOWN

PRODUCT:

STEEL EDGE DOOR
2-PC ADJUSTABLE STEEL FRAME
PART OR ASSEMBLY:
HORIZONTAL CROSS SECTION

NO.	DATE	WH	BY
4	2/15/08	ADD STEEL STUD BUCK	

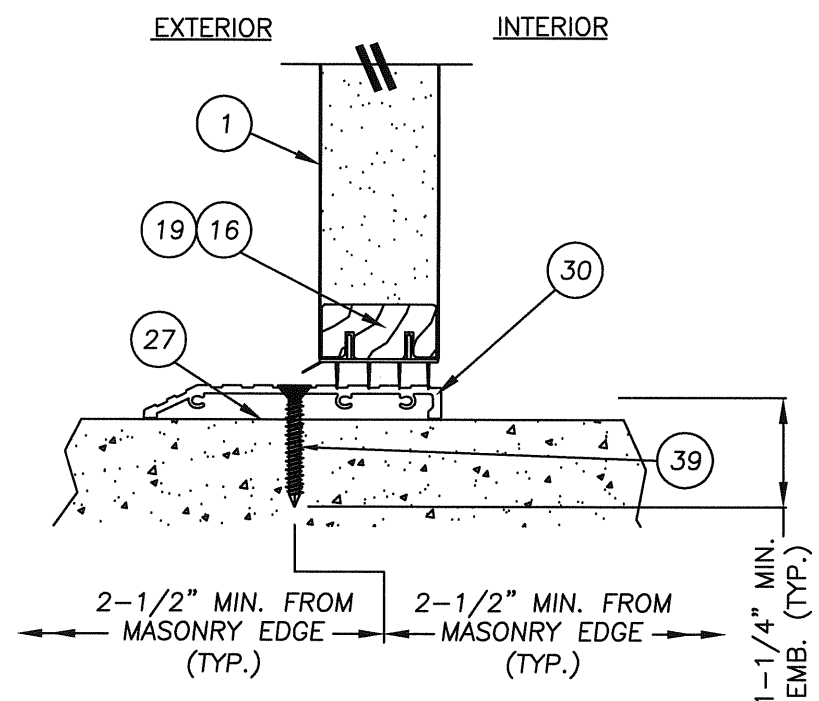
REVISIONS

DATE: 2/22/05
SCALE: N.T.S.
DWG. BY: RAH
CHK. BY: WWH
DRAWING NO.: FL-449
SHEET 2 OF 7

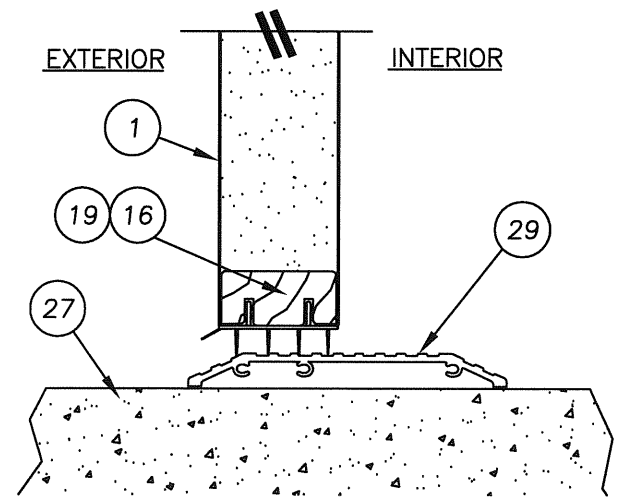
Documents Prepared By:

RW BUILDING CONSULTANTS, INC.
P.O. Box 230 Valrico FL 33595
Phone No.: 813.659.9197
Florida Board of Professional Engineers
Certificate of Authorization No. 9813
Wendell W. Hgney, P.E. No. 54148

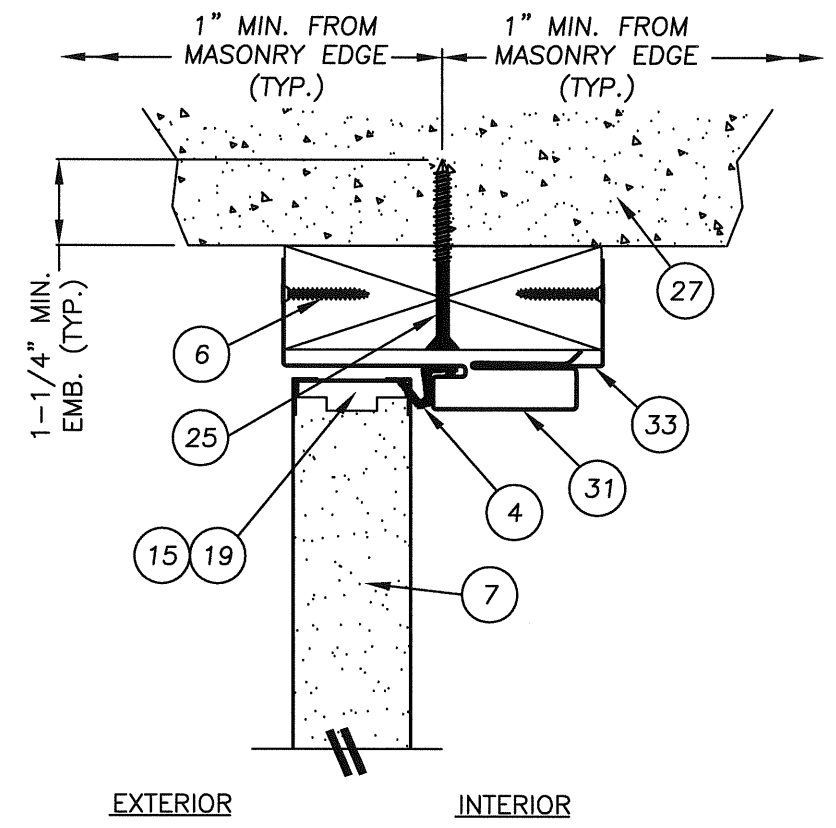
R:\A - Projects\Project Folders\Proj 1301-1400\PF 1343\DWG. RWBC Drawings\FL-449-REV3\FL-449-REV3.dwg, Model



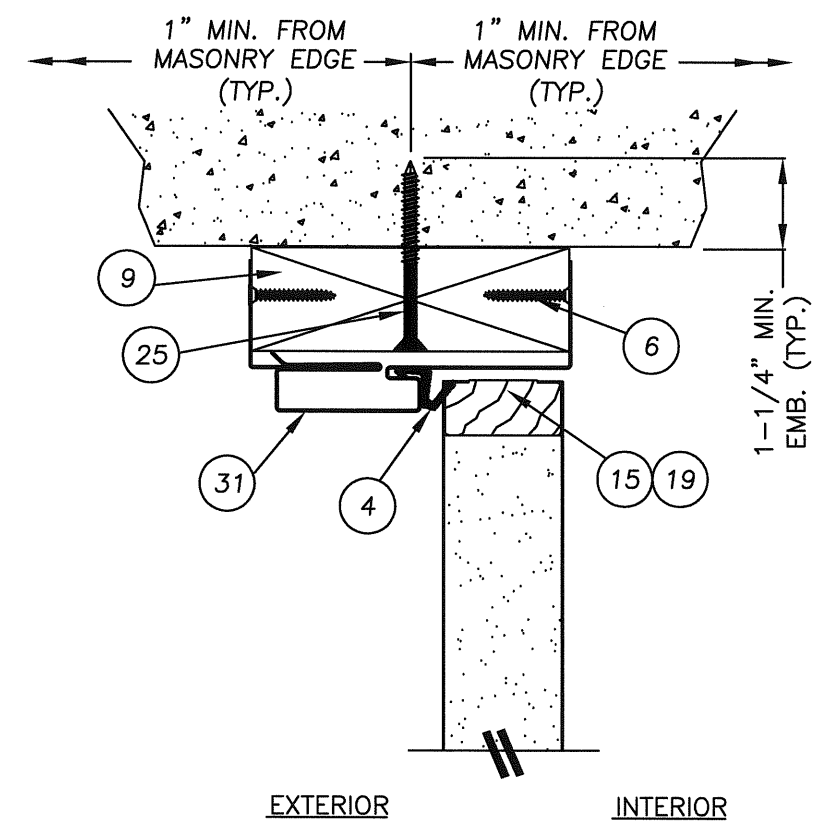
3 VERTICAL CROSS SECTION
3 SHOWN W/ ADA TILE SILL



4 VERTICAL CROSS SECTION
3 SHOWN W/ ADA SILL



1 VERTICAL CROSS SECTION
3 SHOWN W/OUTSWING BUMP FACE



2 VERTICAL CROSS SECTION
3 SHOWN W/INSWING SADDLE

Documents Prepared By: **RW** BUILDING CONSULTANTS, INC.
P.O. Box 230 Valrico FL 33595
Phone No.: 813.659.9197
Florida Board of Professional Engineers
Certificate Of Authorization No. 9813
Wendell W. Haney P.E. No. 54148
2-15-08

PRODUCT: STEEL EDGE DOOR
2-PC ADJUSTABLE STEEL FRAME
PART OR ASSEMBLY: VERTICAL CROSS SECTION

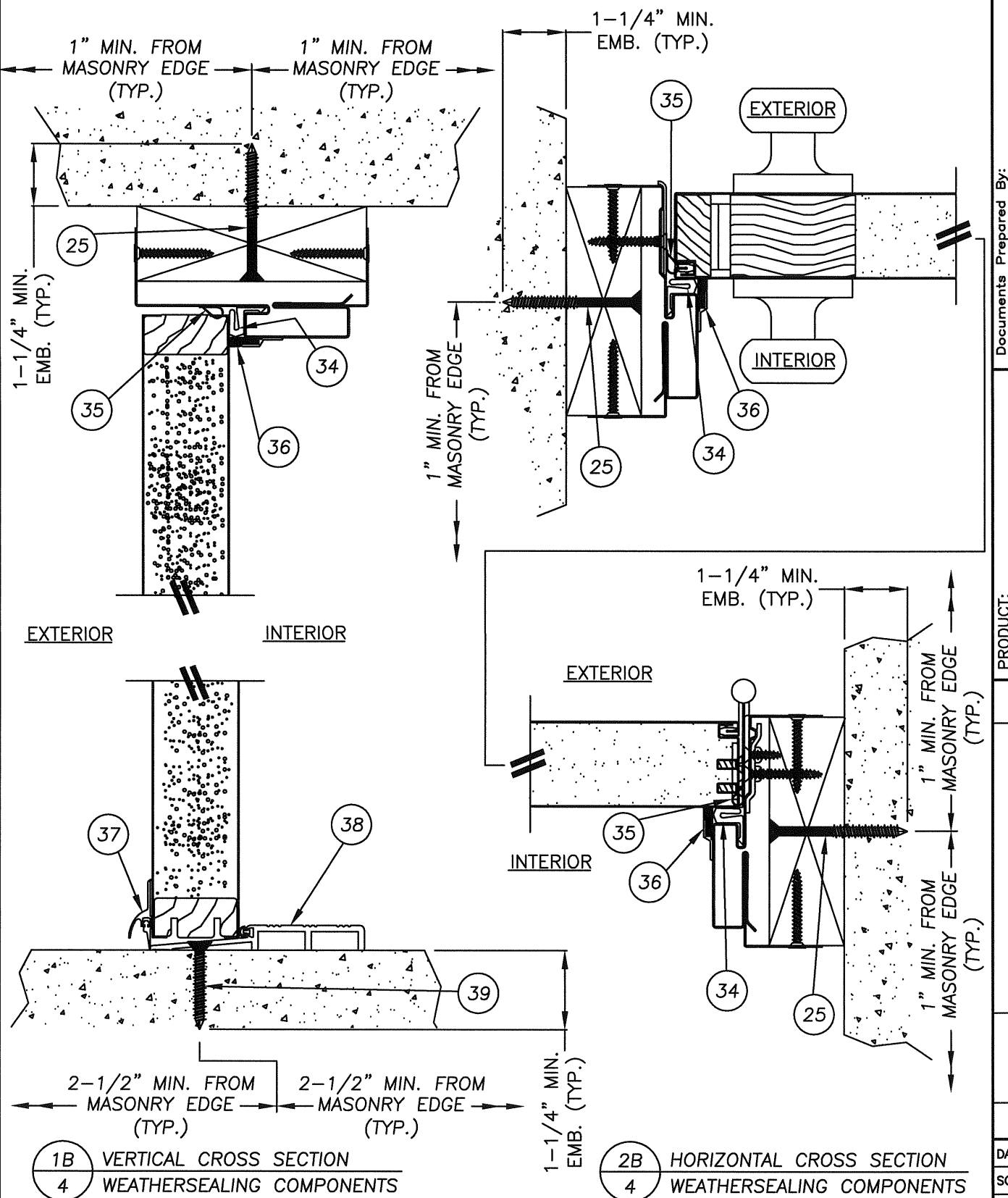
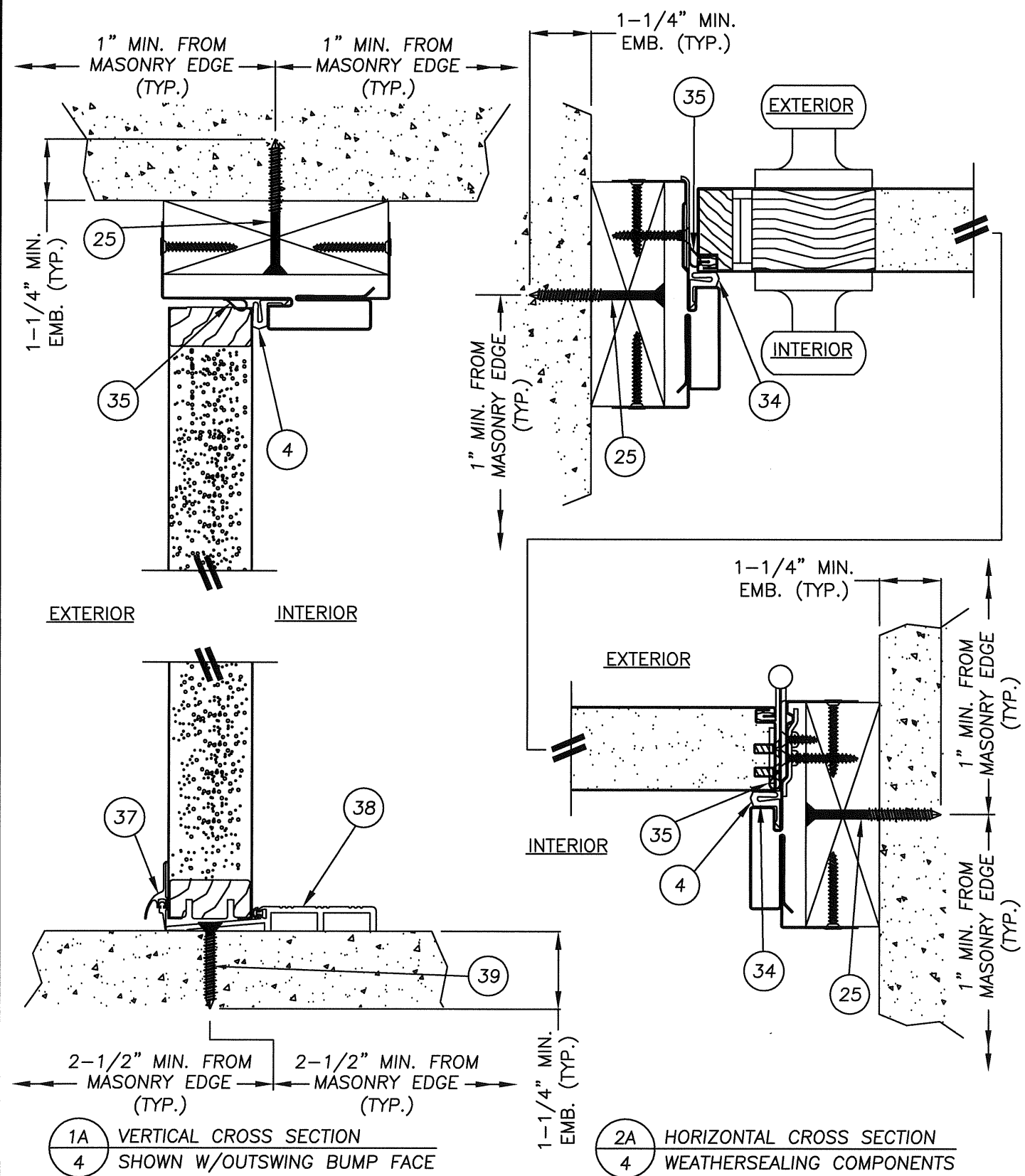
NO.	DATE	WH	BY
4	2/15/08	ADD STEEL STUD BUCK	

REVISIONS

DATE: 2/22/05
SCALE: N.T.S.
DWG. BY: RAH
CHK. BY: WWH
DRAWING NO.: FL-449
SHEET 3 OF 7

© 2008 R.W. BUILDING CONSULTANTS INC.

R:\A - Projects\Project Folders\Proj 1301-1400\PF 1343\DWG\RWBC Drawings\FL-449-REV3\FL-449-REV3.dwg, Model



WEATHERSEALING ARRANGEMENT #1

WEATHERSEALING ARRANGEMENT #2

Documents Prepared By:
RW BUILDING CONSULTANTS, INC.
 P.O. Box 230 Valrico FL 33595
 Phone No.: 813.659.9497
 Florida Board of Professional Engineers
 Certificate of Authorization No. 9813
Wendell W. Hahnel 2-15-08
 P.E. No. 54148

PRODUCT: STEEL EDGE DOOR
 2-PC ADJUSTABLE STEEL FRAME
 PART OR ASSEMBLY: HORIZONTAL AND VERTICAL CROSS SECTION

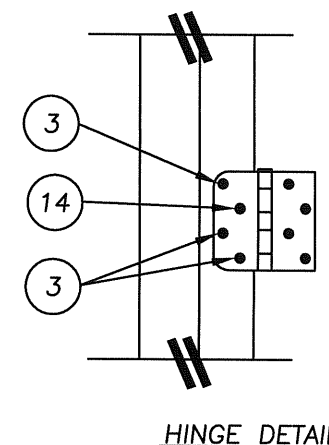
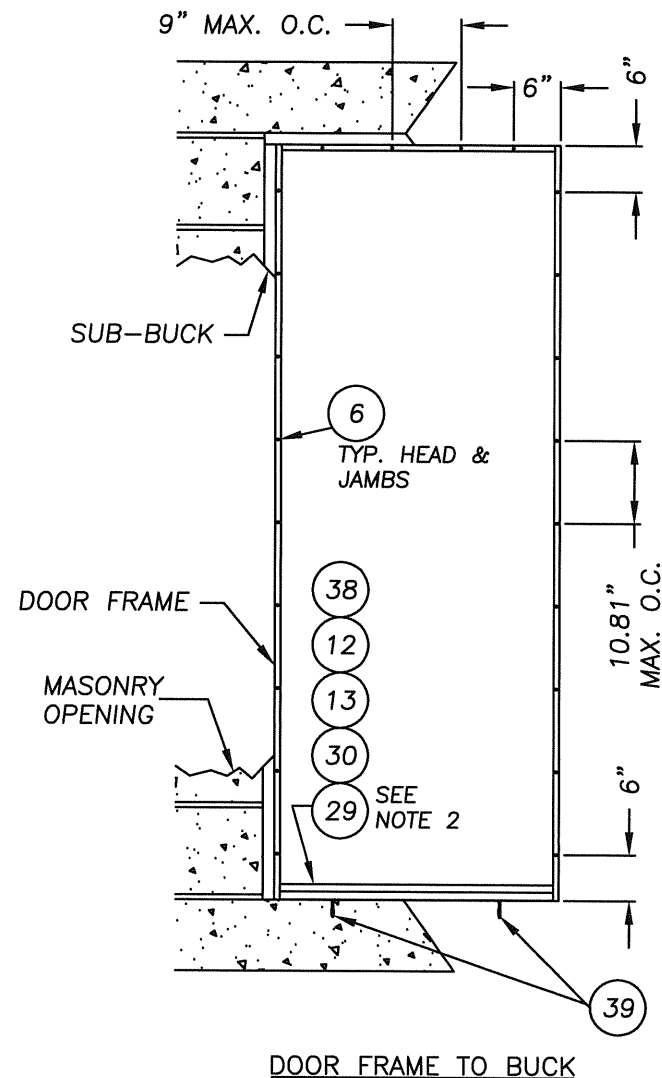
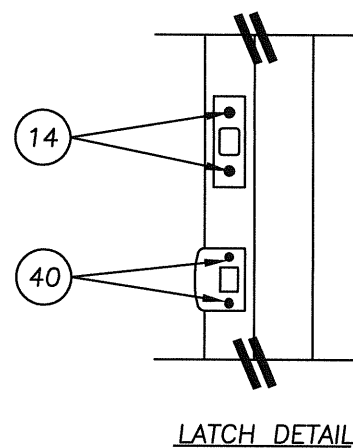
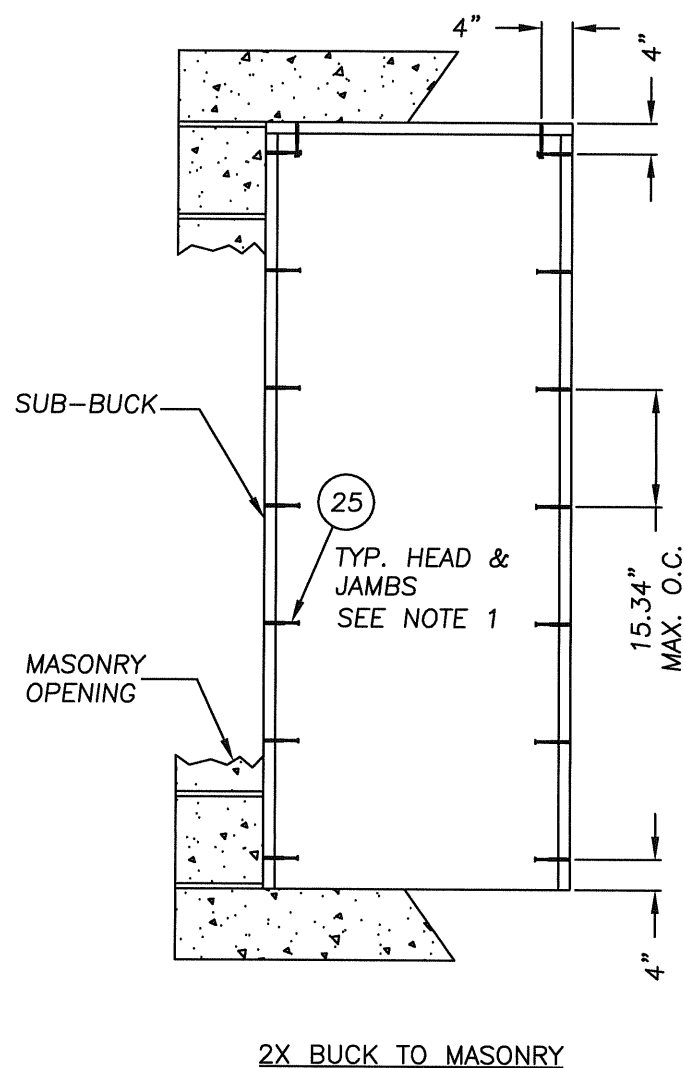
NO.	DATE	WH	BY
4	2/15/08		

REVISIONS

DATE: 2/22/05
 SCALE: N.T.S.
 DWG. BY: RAH
 CHK. BY: WWH
 DRAWING NO.: FL-449
 SHEET 4 OF 7

© 2008 R.W. BUILDING CONSULTANTS INC.

R:\A - Projects\Project Folders\Proj 1301-1400\PF 1343\D. RWBC Drawings\FL-449-REV3\FL-449-REV3.dwg, Model



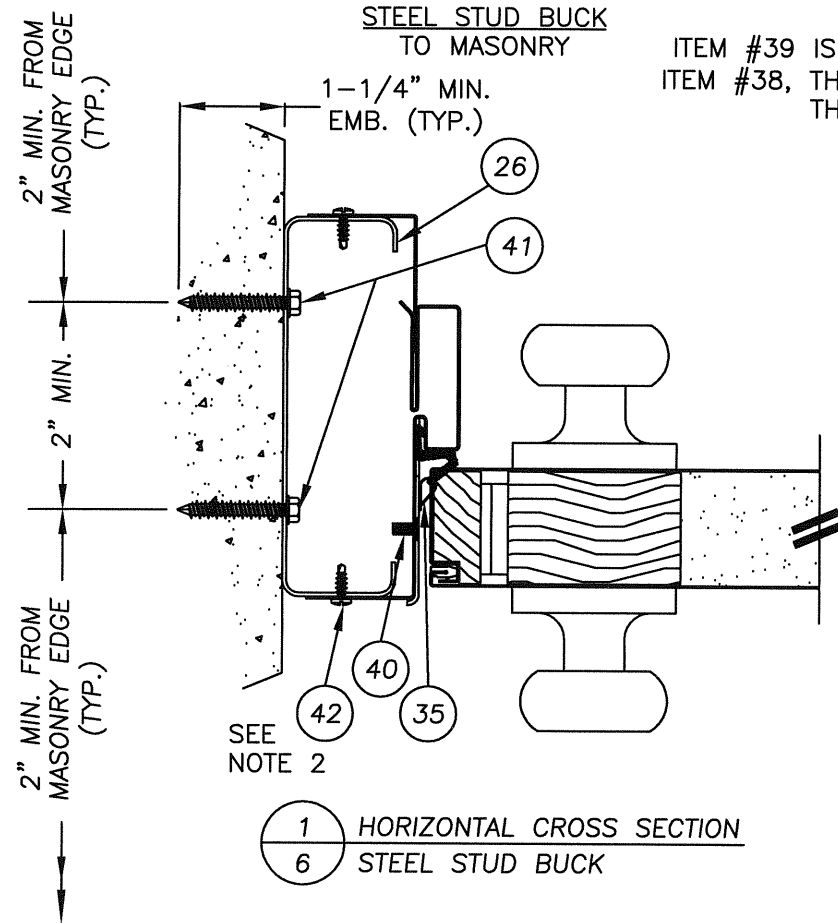
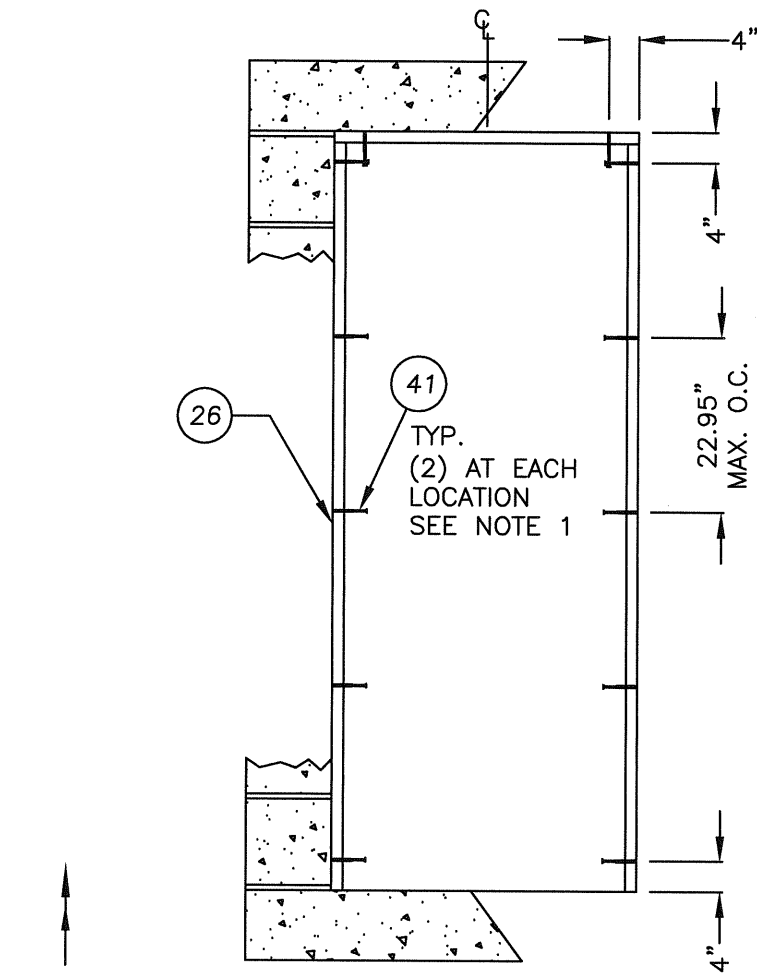
ITEM #39 IS USED ONLY WHEN ITEM #38, THE ADA BUMP FACE THRESHOLD IS USED. SEE NOTE 2.

- NOTES:
- 1/4" Elco Concrete screw anchoring 2x buck require a minimum 1" clearance to masonry edges, a 1-1/4" minimum embedment and a minimum 4" clearance to adjacent Concrete screws. Substitution of equal concrete screws from a different supplier may have different edge distance and center distance requirements. Concrete screw locations at the corners locations may be adjusted to maintain the minimum edge distance to mortar joints. If Concrete screw locations noted as "MAX. ON CENTER" must be adjusted to maintain the minimum edge distance to mortar joints, additional Concrete screws may be required to insure the maximum on center dimension is not exceeded.
 - 1/4" ITW concrete screws anchoring frame and/or sill require a minimum 2-1/2" clearance to masonry edges, a 1-1/4" minimum embedment and a minimum 3" clearance to adjacent concrete screws. Substitution of equal concrete screws from a different supplier may have different edge distance and center distance requirements. Concrete screw locations at the corners locations may be adjusted to maintain the minimum edge distance to mortar joints. If Concrete screw locations noted as "MAX. ON CENTER" must be adjusted to maintain the minimum edge distance to mortar joints, additional Concrete screws may be required to insure the maximum on center dimension is not exceeded.

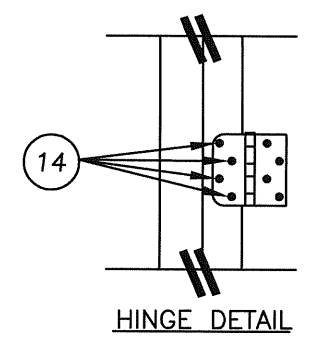
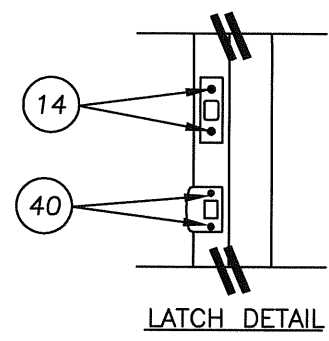
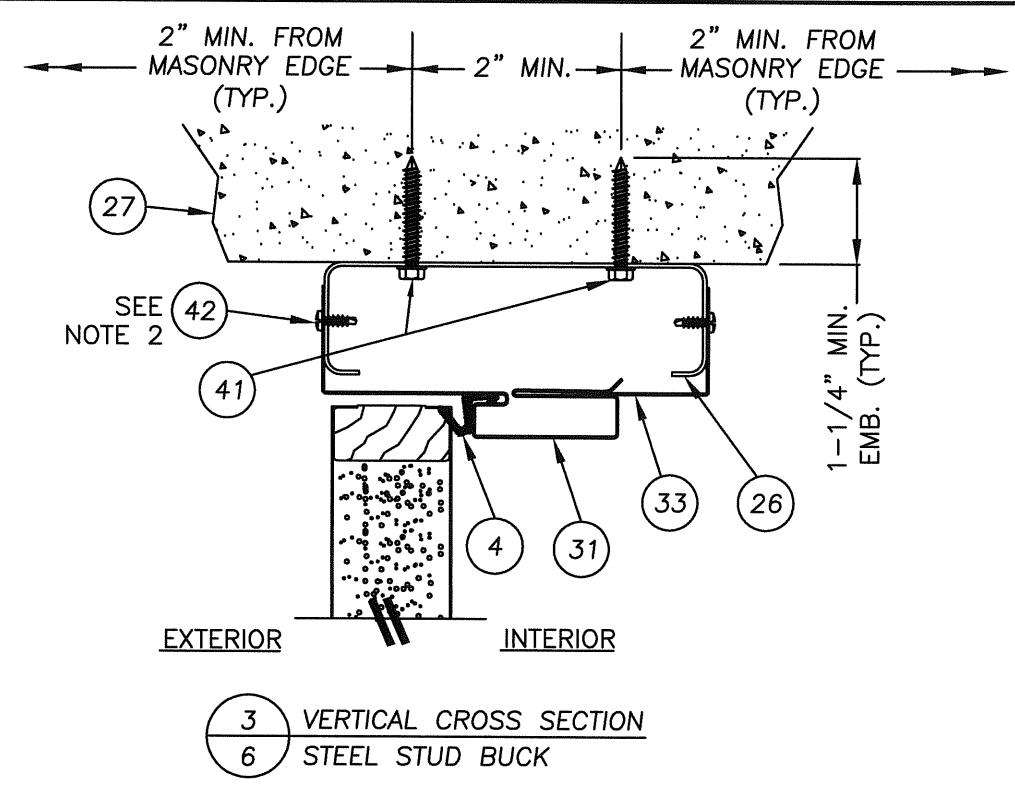
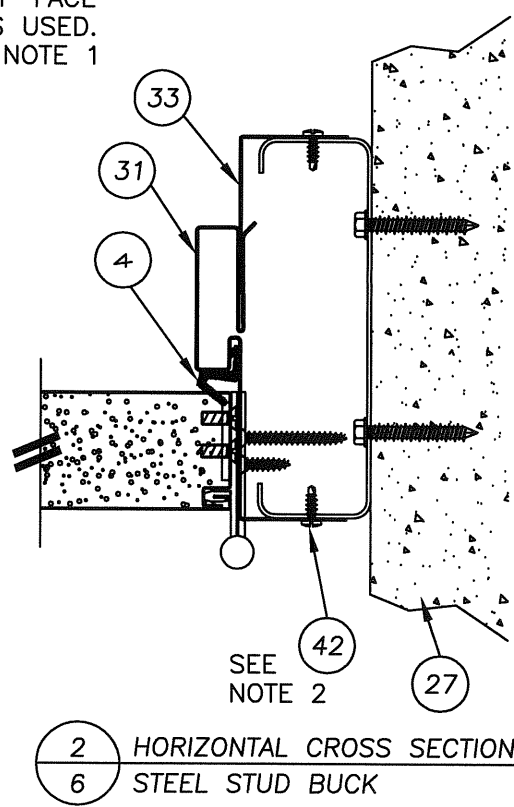
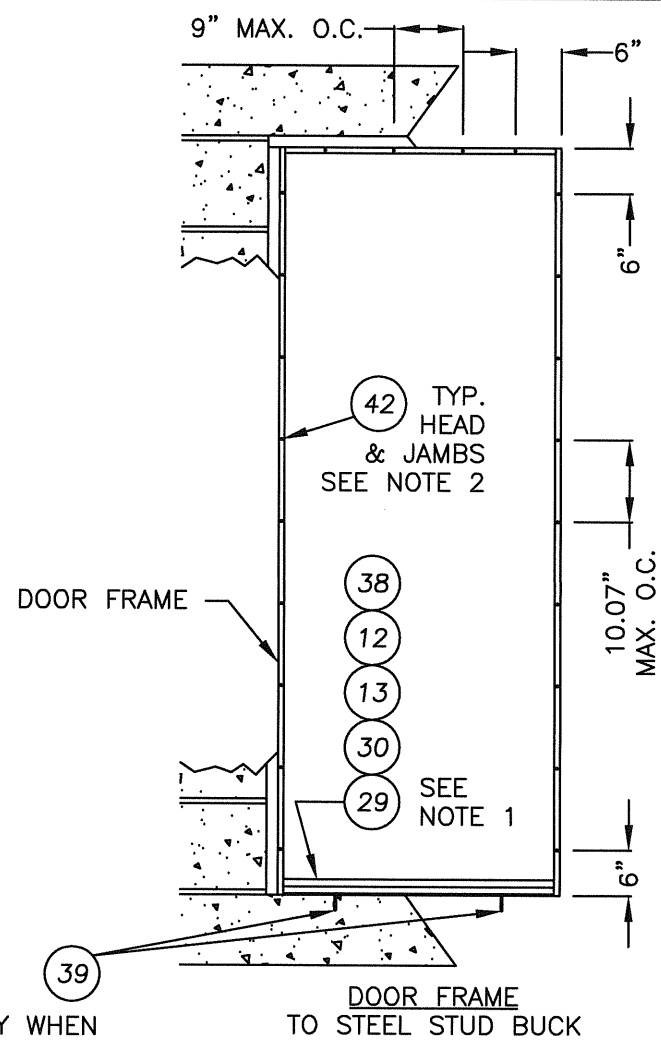
Documents Prepared By: **RW BUILDING CONSULTANTS, INC.**
P.O. Box 230 Valrico FL 33595
Phone No.: 813.659.9197
Florida Board of Professional Engineers
Certificate Of Authorization No. 9813
Wendell W. Haney 2-15-08
Wendell W. Haney, P.E. No. 54158

PRODUCT:	STEEL EDGE DOOR
	2-PC ADJUSTABLE STEEL FRAME
	PART OR ASSEMBLY:
	BUCK AND FRAME ANCHORING
	WH
	BY
	REVISIONS
	4
	2/15/08
	ADD STEEL STUD BUCK
	NO. DATE
DATE:	2/22/05
SCALE:	N.T.S.
DWG. BY:	RAH
CHK. BY:	WWH
DRAWING NO.:	FL-449
SHEET	5 OF 7

© 2008 R.W. BUILDING CONSULTANTS INC.



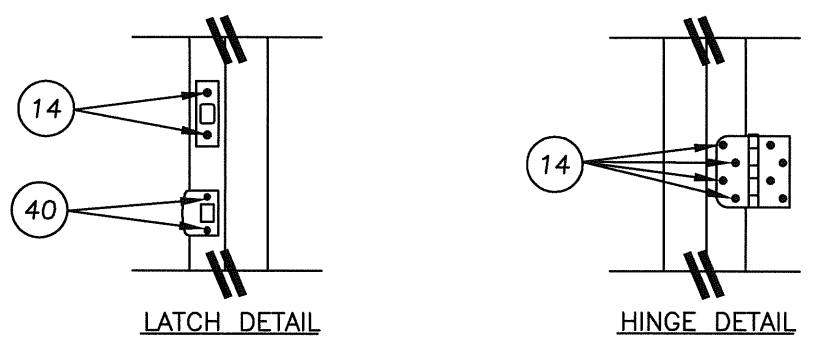
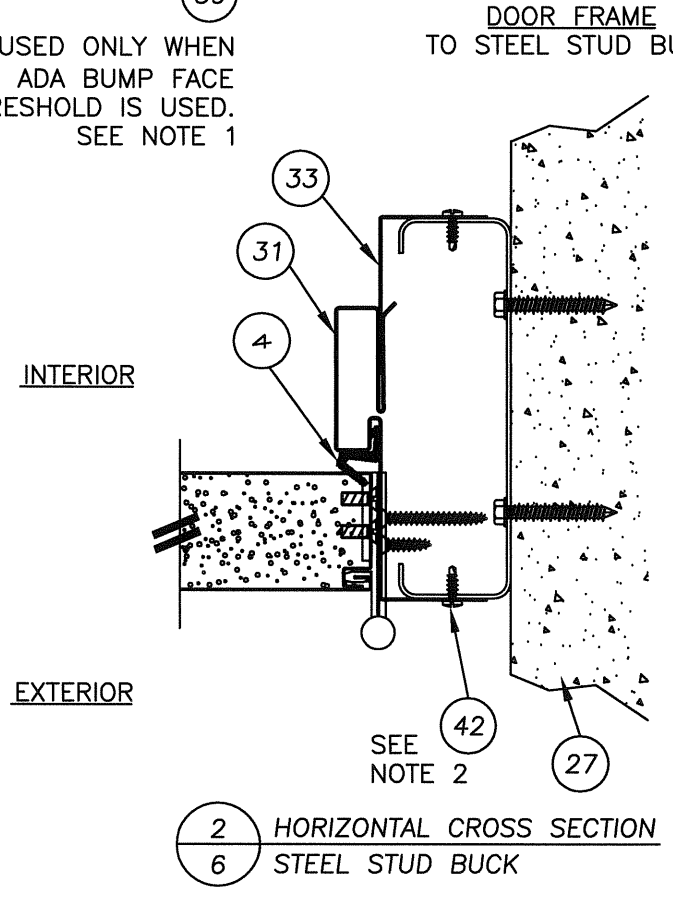
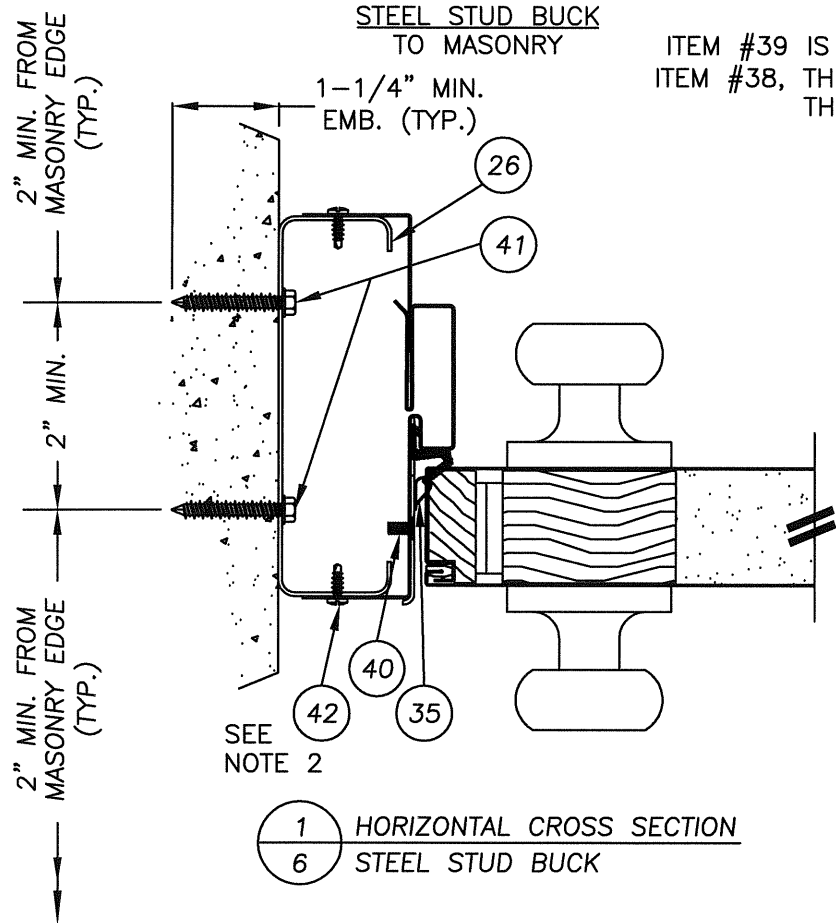
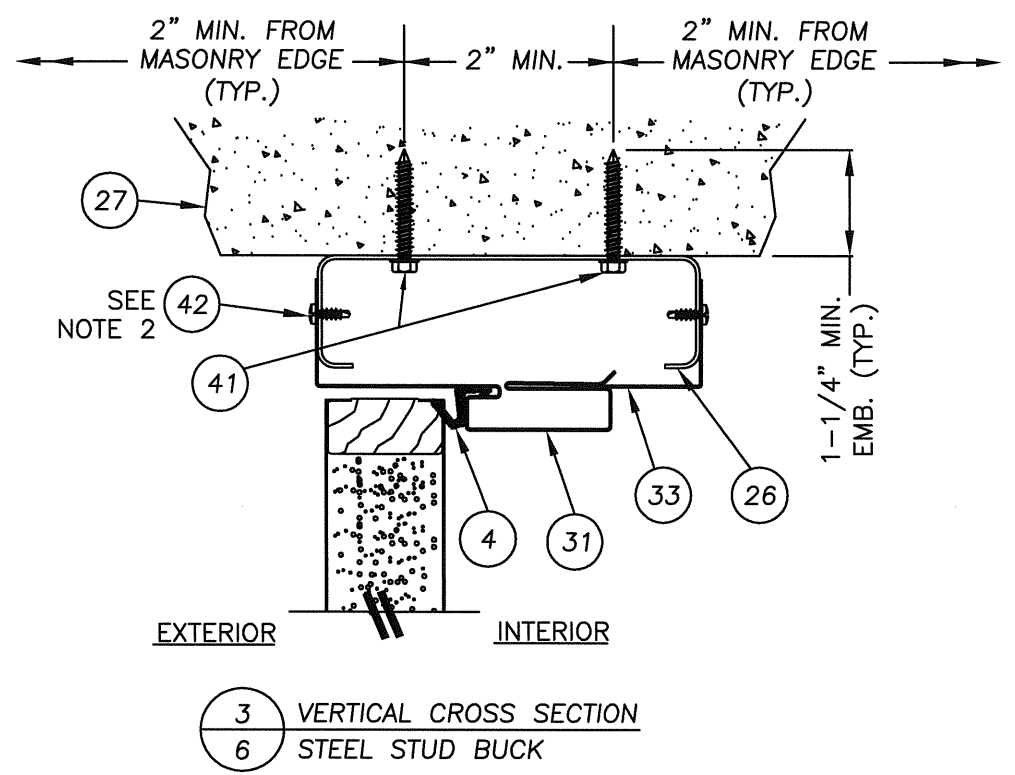
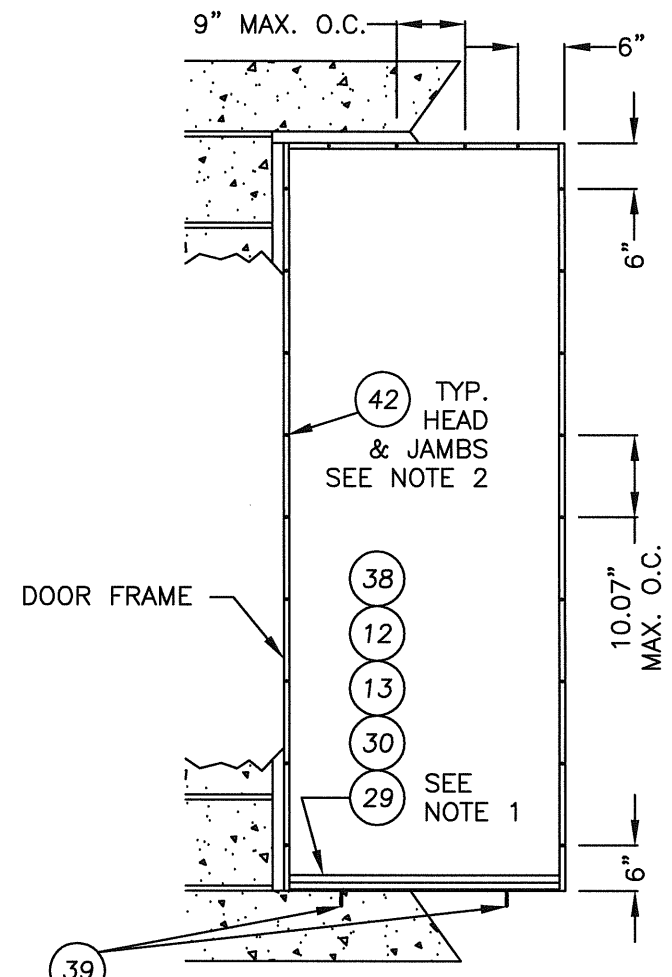
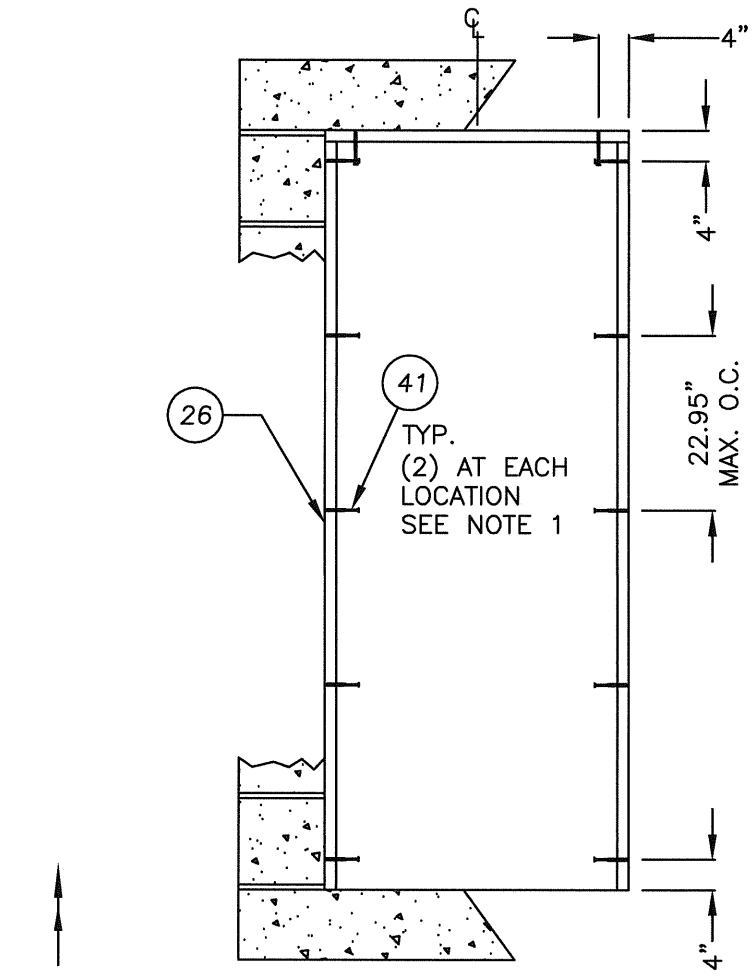
ITEM #39 IS USED ONLY WHEN ITEM #38, THE ADA BUMP FACE THRESHOLD IS USED. SEE NOTE 1



NOTES:

- 1/4" ITW concrete screws require a minimum 2-1/2" clearance to masonry edges unless noted otherwise, a 1-1/4" minimum embedment and a minimum 3" clearance to adjacent concrete screws. Substitution of equal concrete screws from a different supplier may have different edge distance and center distance requirements. Concrete screw locations at the corners locations may be adjusted to maintain the minimum edge distance to mortar joints. If Concrete screw locations noted as "MAX. ON CENTER" must be adjusted to maintain the minimum edge distance to mortar joints, additional Concrete screws may be required to insure the maximum on center dimension is not exceeded.
- A minimum of 3 threads shall protrude through the steel stud buck substrate.

Documents Prepared By:		R.W. BUILDING CONSULTANTS, INC. P.O. Box 230 Valrico FL 33595 Phone No.: 813.659.9197 Florida Board of Professional Engineers Certificate Of Authorization No. 9813 Wendell W. Hanley, P.E. No. 54148	
PRODUCT:	STEEL EDGE DOOR FRAME	WH	BY
	2-PC ADJUSTABLE STEEL FRAME		
PART OR ASSEMBLY:	VERTICAL AND HORIZONTAL CROSS SECTION W/ STEEL STUD BUCK		
NO.	DATE	ADD STEEL STUD BUCK	REVISIONS
4	2/15/08		
DATE: 2/22/05			
SCALE: N.T.S.			
DWG. BY: RAH			
CHK. BY: WWH			
DRAWING NO.: FL-449			
SHEET 6 OF 7			



- NOTES:
- 1-1/4" ITW concrete screws require a minimum 2-1/2" clearance to masonry edges unless noted otherwise, a 1-1/4" minimum embedment and a minimum 3" clearance to adjacent concrete screws. Substitution of equal concrete screws from a different supplier may have different edge distance and center distance requirements. Concrete screw locations at the corners locations may be adjusted to maintain the minimum edge distance to mortar joints. If Concrete screw locations noted as "MAX. ON CENTER" must be adjusted to maintain the minimum edge distance to mortar joints, additional Concrete screws may be required to insure the maximum on center dimension is not exceeded.
 - A minimum of 3 threads shall protrude through the steel stud buck substrate.

1 HORIZONTAL CROSS SECTION
6 STEEL STUD BUCK

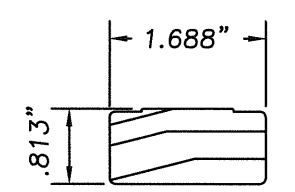
2 HORIZONTAL CROSS SECTION
6 STEEL STUD BUCK

3 VERTICAL CROSS SECTION
6 STEEL STUD BUCK

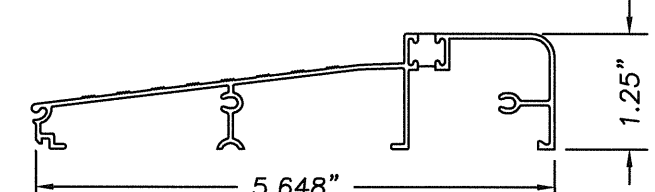
Documents Prepared By:		RW BUILDING CONSULTANTS, INC. P.O. Box 230 Valrico FL 33595 Phone No.: 813.659.9197	
PRODUCT:		STEEL EDGE DOOR FRAME 2-PC ADJUSTABLE STEEL FRAME	
PART OR ASSEMBLY:		VERTICAL AND HORIZONTAL CROSS SECTION W/ STEEL STUD BUCK	
NO.	DATE	WH	BY
4	2/15/08	ADD STEEL STUD BUCK	
REVISIONS			
DATE:		2/22/05	
SCALE:		N.T.S.	
DWG. BY:		RAH	
CHK. BY:		WWH	
DRAWING NO.:		FL-449	
SHEET		6 OF 7	

R:\A - Projects\Project Folders\Proj 1301-1400\PF 1343\DWG\RWBC Drawings\FL-449-REV3\FL-449-REV3.dwg, Model

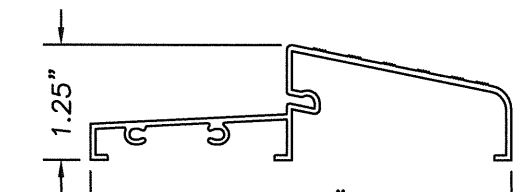
ITEM	DESCRIPTION	MATERIAL
1	STEEL DOOR FACING 0.020" THK.	STEEL
2	4" x 4" BUTT HINGE	STEEL
3	#10 X 1/2" PFH MACHINE SCREW (HINGE TO FRAME)	STEEL
4	COMPRESSION WEATHERSTRIP (SCHLEGEL QDS650)	FOAM
5	LOCKBLOCK (CA)	WOOD
6	#8 x 1 1/4" PFH WOOD SCREW	STEEL
7	POLYURETHANE FOAM CORE (BASF 2.0 TO 2.5lbs./cubic ft)	FOAM
8	LOCKBLOCK (EN)	WOOD
9	2x BUCK	WOOD
10	KWIKSET 200 DL SERIES (GRADE II)	-
11	KWIKSET DEADBOLT 970 SERIES (GRADE II)	-
12	INSWING THRESHOLD	ALUMINUM
13	OUTSWING BUMP THRESHOLD (AFCO)	ALUMINUM
14	#8 x 1-1/2" PFH WOOD SCREW	STEEL
15	DOOR TOP RAIL (CA, CH)	WOOD
16	DOOR BOTTOM RAIL (CA, CH)	COMPOSITE
17	INSWING DOOR BOTTOM FIN TYPE SWEEP	PVC
18	PLASTIC LOCK RING	PLASTIC
19	DOOR TOP/BOTTOM RAIL (EN) .028" THK.	STEEL
20	LOCK AND HINGE STILE (CA) (INTEGRAL TO DOOR FACE .020" THK.)	STEEL
21	LOCK AND HINGE STILE (EN) .028" THK.	STEEL
22	LOCK AND HINGE STILE (CH) .028" THK.	STEEL
23	SIDE JAMB CLOSURE SECTION (0.028" THK.)	STEEL
24	FRAME HINGE JAMB (0.028" THK.)	STEEL
25	1/4" X 2-3/4" ELCO PFH TAPCON	STEEL
26	SSMA STUD 550S162-54 Fy = 33 ksi, Fu = 45 ksi	STEEL
27	MASONRY	CONCRETE
28	HINGE REINFORCEMENT 14 GA.	STEEL
29	ADA SILL	ALUMINUM
30	ADA TILE FACE	ALUMINUM
31	FRAME HEAD JAMB (0.028" THK.)	STEEL
32	FRAME STRIKE JAMB (0.028" THK.)	STEEL
33	HEAD JAMB CLOSURE SECTION (0.028" THK.)	STEEL
34	COMPRESSION WEATHERSTRIP (SCHLEGEL QDS 500)	FOAM
35	DOOR GASKET (PEMKO S88)	VINYL
36	JAMB WEATHERSTRIP (PEMKO 305CR)	AL/RUBBER
37	DOOR SWEEP (PEMKO 3452AV)	AL/VINYL
38	LOW PROFILE O/S BUMP FACE SILL (DLP)	ALUMINUM
39	1/4" X 1-3/4" ITW PFH TAPCON	STEEL
40	#8 x 3/8" PFH MACHINE SCREW	STEEL
41	1/4" X 1-3/4" ITW HWH TAPCON	STEEL
42	#10 X 3/4" HILTI KWK-PRO SELF DRILLING SCREW	STEEL



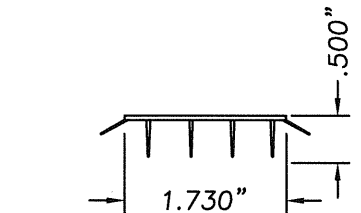
15 DOOR TOP RAIL (CA, CH)



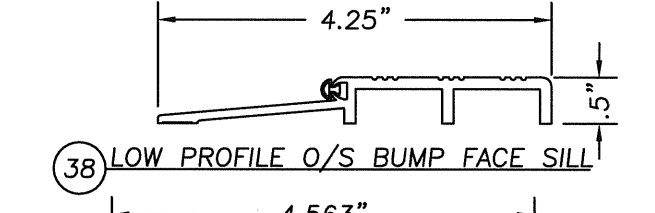
12 INSWING ALUMINUM THRESHOLD



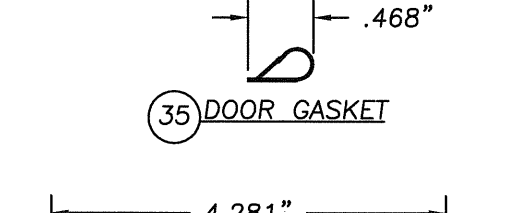
13 OUTSWING THRESHOLD



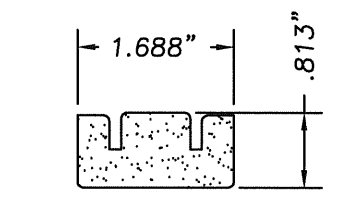
17 FIN TYPE SWEEP



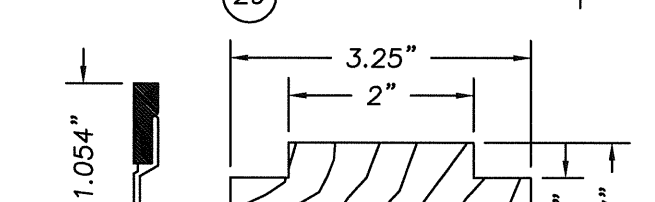
38 LOW PROFILE O/S BUMP FACE SILL



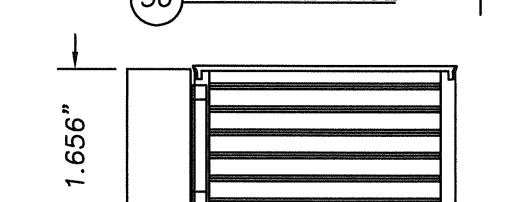
35 DOOR GASKET



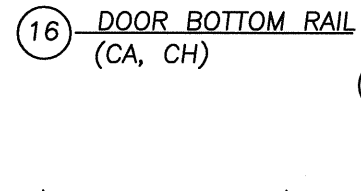
16 DOOR BOTTOM RAIL (CA, CH)



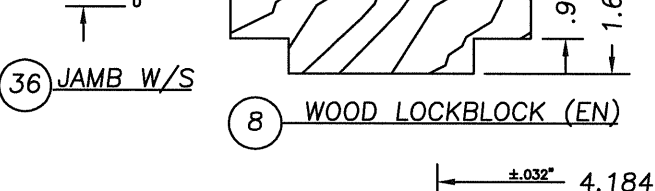
29 ADA SILL



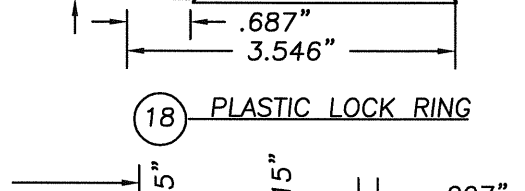
30 ADA TILE FACE



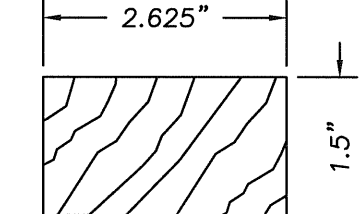
16 DOOR BOTTOM RAIL (CA, CH)



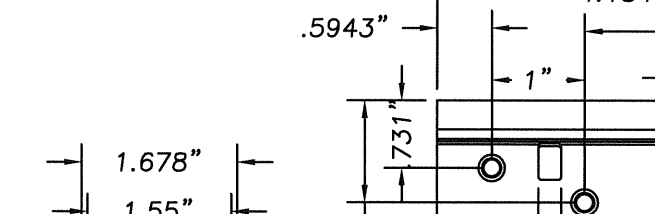
36 JAMB W/S



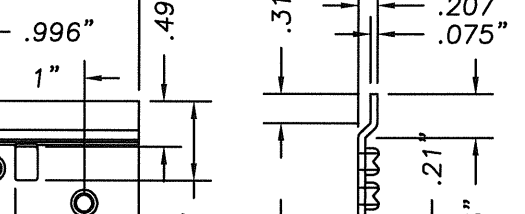
18 PLASTIC LOCK RING



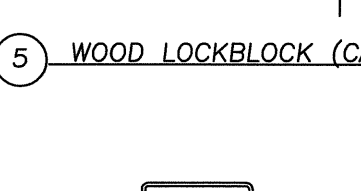
5 WOOD LOCKBLOCK (CA)



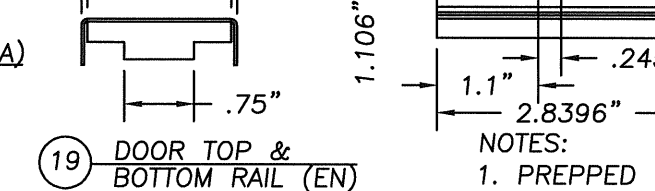
19 DOOR TOP & BOTTOM RAIL (EN)



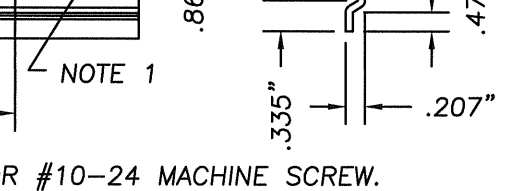
8 WOOD LOCKBLOCK (EN)



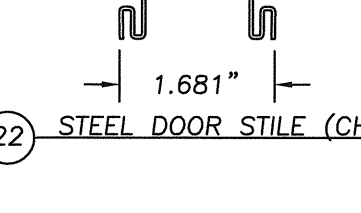
22 STEEL DOOR STILE (CH)



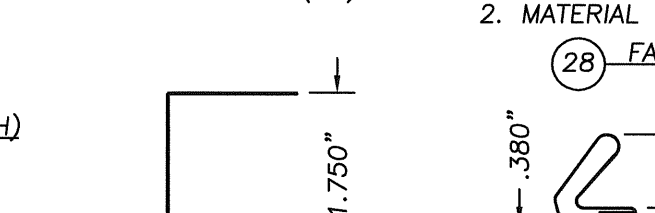
20 STEEL DOOR STILE (CA)



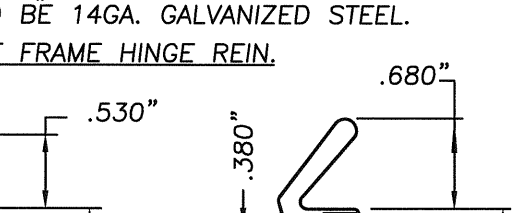
28 FAST FRAME HINGE REIN.



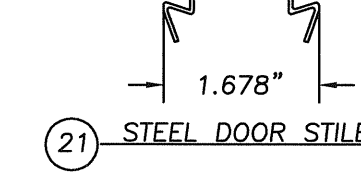
21 STEEL DOOR STILE (EN)



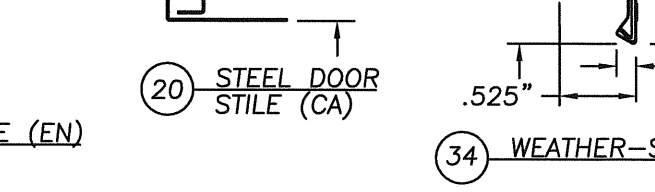
34 WEATHER-STRIP



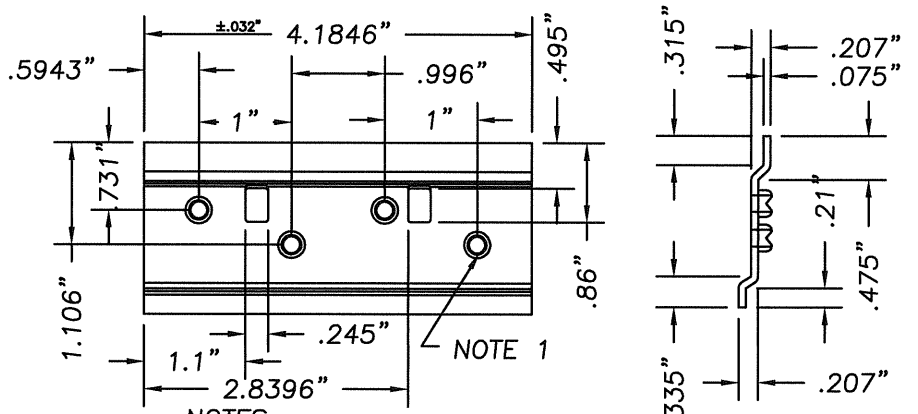
4 WEATHER-STRIP



32 31 24 FRAME HINGE, STRIKE AND HEAD JAMB



33 23 SIDE HEAD & JAMB CLOSURE SECT.



NOTES:
 1. PREPPED FOR #10-24 MACHINE SCREW.
 2. MATERIAL TO BE 14GA. GALVANIZED STEEL.

Documents Prepared By:
 RW BUILDING CONSULTANTS, INC.
 P.O. Box 230 Valrico FL 33595
 Phone No.: 813.659.9197
 Florida Board of Professional Engineers
 Certificate Of Authorization No. 9813
 Wendell W. Haney, P.E. No. 54158
 215-08

PRODUCT:
 STEEL EDGE DOOR
 2-PC ADJUSTABLE STEEL FRAME
 PART OR ASSEMBLY:
 BILL OF MATERIAL
 & COMPONENTS

NO.	DATE	ADD STEEL STUD BUCK	WH	BY
4	2/15/08			

REVISIONS

DATE: 2/22/05
 SCALE: N.T.S.
 DWG. BY: RAH
 CHK. BY: WWH
 DRAWING NO.: FL-449
 SHEET 7 OF 7

© 2008 R.W. BUILDING CONSULTANTS INC.