



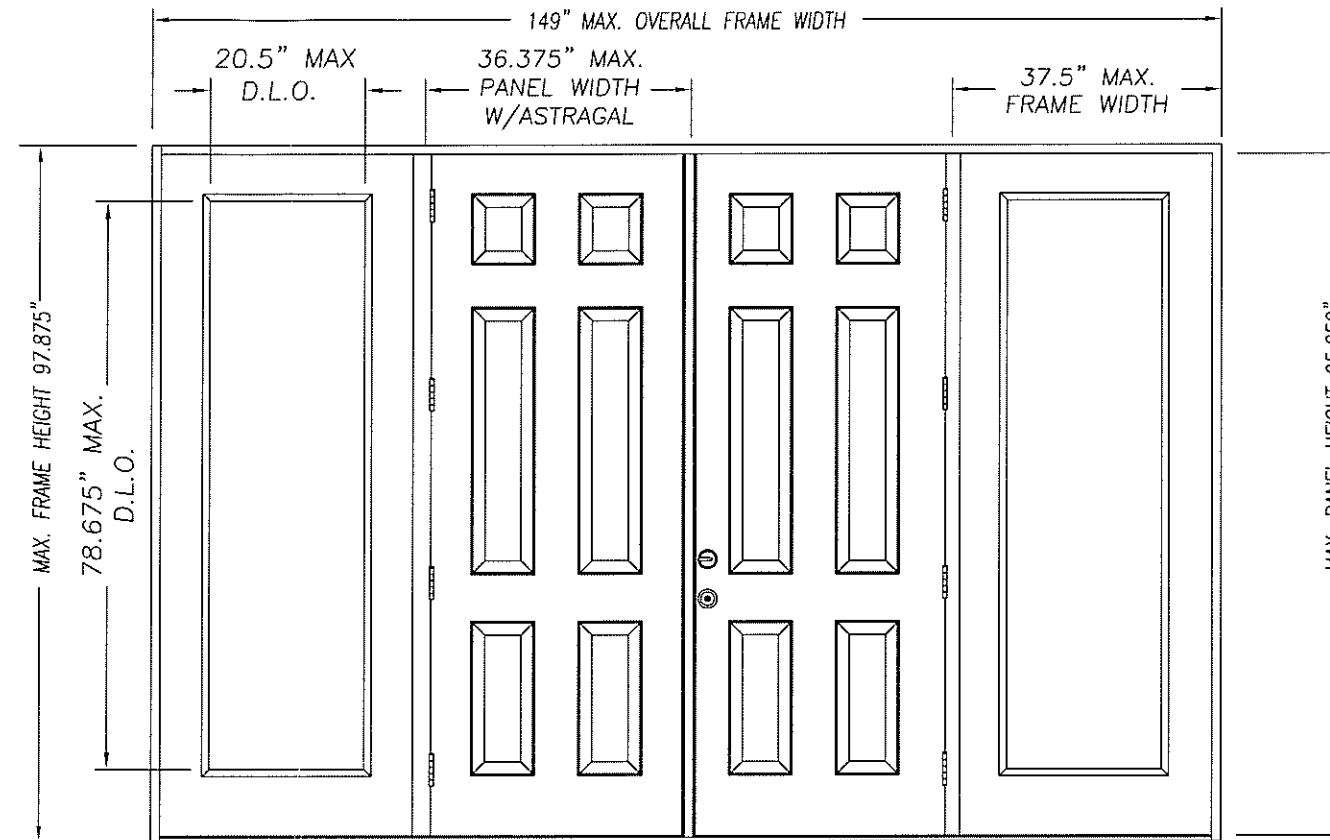
HURRICANE BELLEVILLE FIBERGLASS DOOR UNIT
8'-0" DOUBLE DOOR WITH / WITHOUT SIDELITES

GENERAL NOTES

- EVALUATED FOR USE IN LOCATIONS ADHERING TO THE FLORIDA BUILDING CODE AND WHERE PRESSURE REQUIREMENTS AS DETERMINED BY ASCE 7, MINIMUM DESIGN LOADS FOR BUILDINGS AND OTHER STRUCTURES, DOES NOT EXCEED THE DESIGN PRESSURES LISTED.
- THIS PRODUCT DOES NOT REQUIRE THE USE OF A HURRICANE PROTECTIVE DEVICE (SHUTTERS).
- POLYURETHANE CORE FLAME SPREAD INDEX OF 50 AND SMOKE DEVELOPED INDEX OF 60 PER ASTM E84.
- PLASTICS TESTING OF FIBERGLASS FACING:

TEST DESCRIPTION	DESIGNATION	RESULT
SELF IGNITION TEMP	ASTM D1929	803 °F > 650 °F
RATE OF BURNING	ASTM D635	0.79 IN/MIN (C-1)
SMOKE DENSITY	ASTM D2843	48.9%
TENSILE STRENGTH*	ASTM D638	-7.3% DIFF

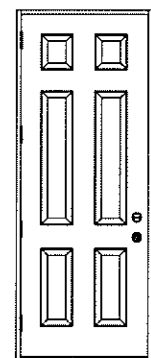
* COMPARATIVE TENSILE STRENGTH AFTER WEATHERING
4500 HOURS XENON ARC METHOD 1



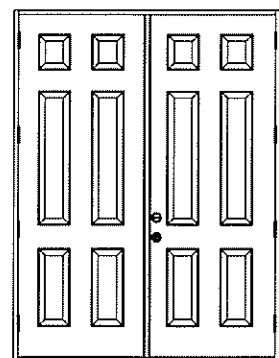
DOUBLE DOOR UNIT W/SIDELITES

Addendum to NAMI

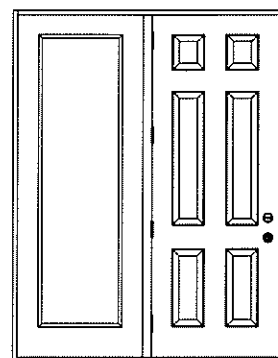
Certification No.: N1005930-R7
Reviewed By: [Signature]
Date Reviewed: 12/17/08



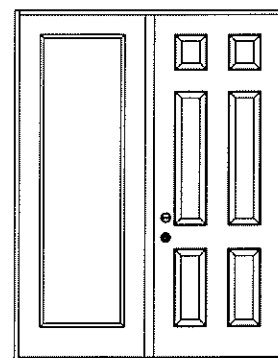
SINGLE DOOR UNIT



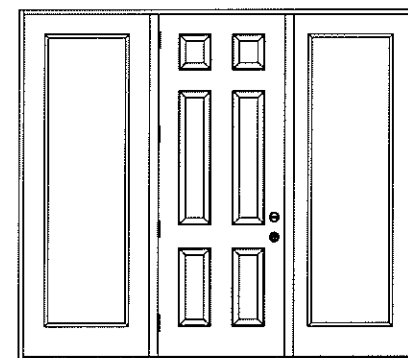
DOUBLE DOOR UNIT



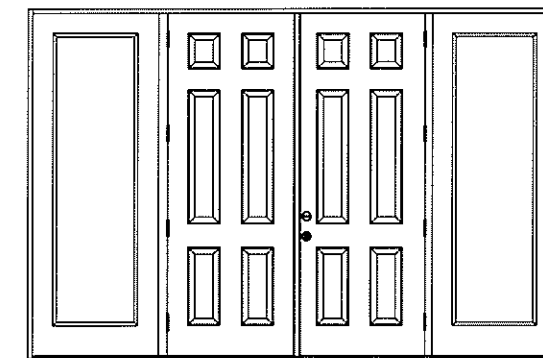
SINGLE DOOR UNIT
WITH SIDELITE



SINGLE DOOR UNIT
WITH SIDELITE



SINGLE DOOR UNIT W/SIDELITES



DOUBLE DOOR UNIT W/SIDELITES

TABLE OF CONTENTS

SHEET #	DESCRIPTION
1	TYPICAL ELEVATIONS & GENERAL NOTES
2	ANCHORING LOCATIONS & DETAILS
3	ANCHORING LOCATIONS & DETAILS

CONFIG	MAX WIDTH	DESIGN PRESSURE RATING		WHERE WATER INFILTRATION PERFORMANCE IS REQUIRED TO BE 15% OF DESIGN PRESSURE		
		INSWING	OUTSWING	INSWING	OUTSWING	OUTSWING*
X	37.5"	+70.0 / -70.0	+70.0 / -70.0	+19.0 / -19.0	+70.0 / -70.0	+70.0 / -70.0
XX	74"	+50.5 / -50.5	+55.0 / -50.5	+19.0 / -19.0	+40.0 / -40.0	+55.0 / -50.5
OX or XO	75"	+50.5 / -50.5	+55.0 / -50.5	+19.0 / -19.0	+40.0 / -40.0	+55.0 / -50.5
OXO	112.5"	+50.5 / -50.5	+55.0 / -50.5	+19.0 / -19.0	+40.0 / -40.0	+55.0 / -50.5
OXXO	149"	+50.5 / -50.5	+55.0 / -50.5	+19.0 / -19.0	+40.0 / -40.0	+55.0 / -50.5

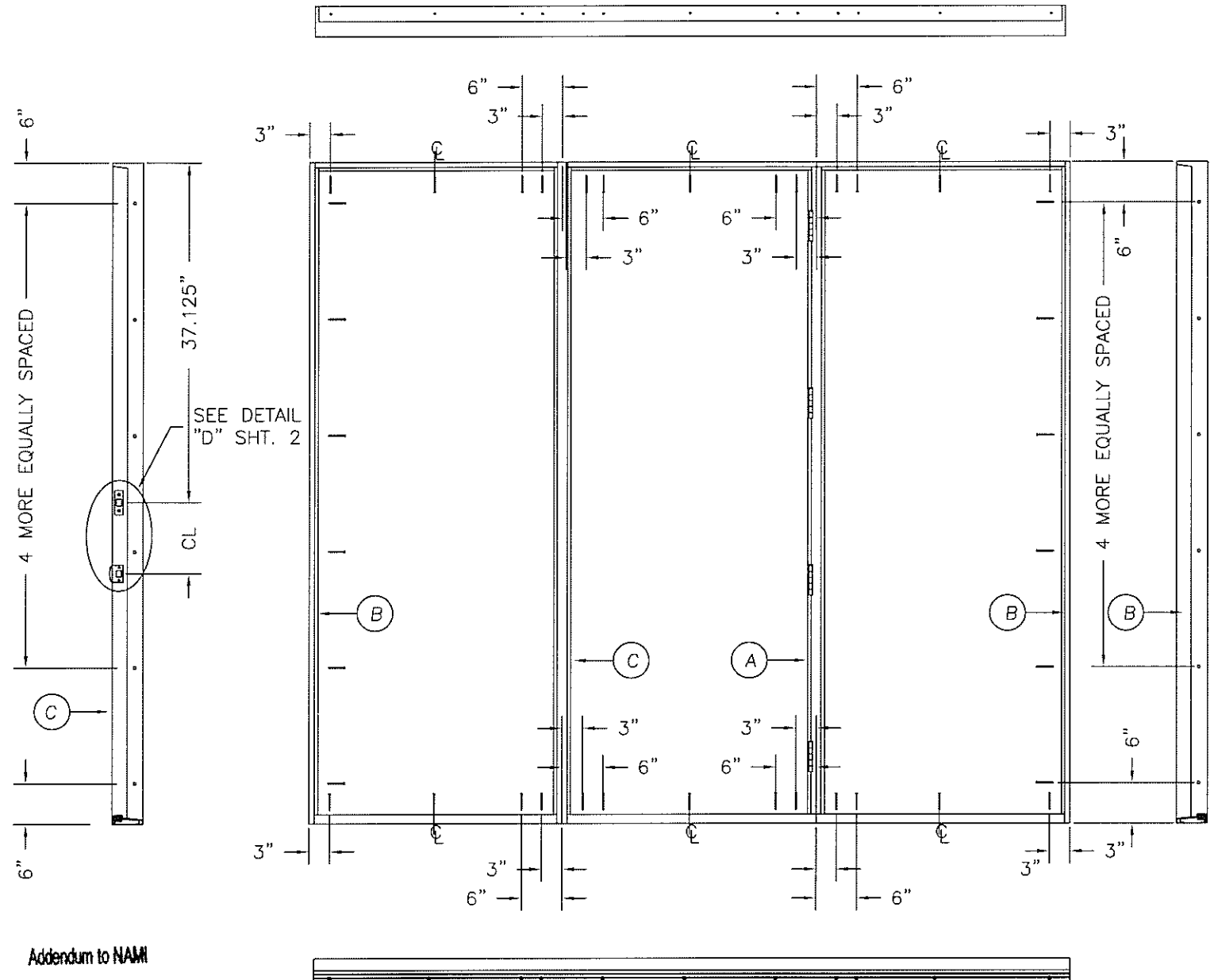
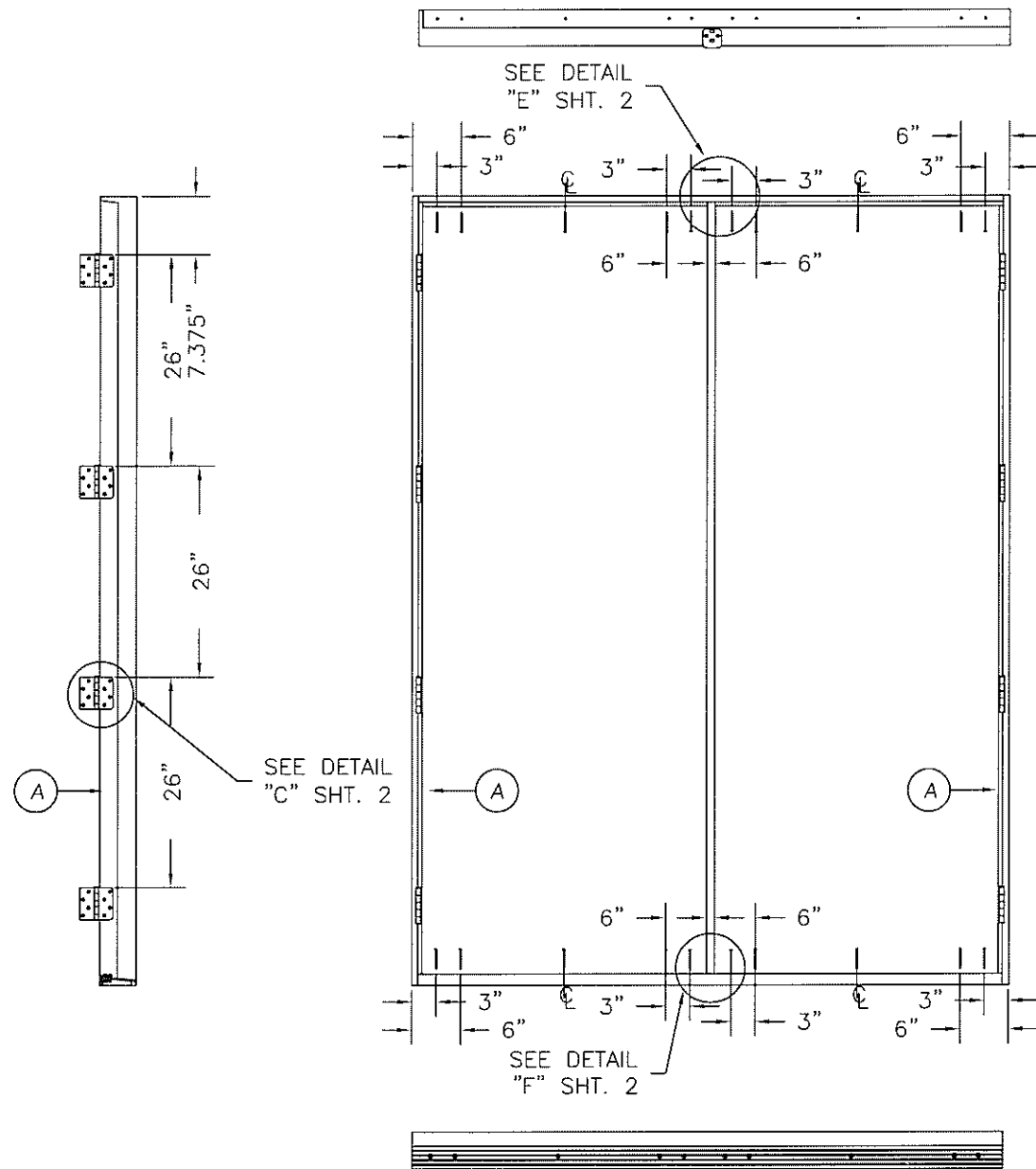
* High Dam Threshold Design

MASONITE INTERNATIONAL CORP.
7300 REAMES RD.
CHARLOTTE, NC 28216

PRODUCT: "EXTERIOR DOOR PRODUCT"
DOUBLE 8'0" OPAQUE
FIBERGLASS DOOR
PART OR ASSEMBLY:
TYPICAL ELEVATIONS
& GENERAL NOTES

NO.	DATE	REVISIONS	BY	
				SWS
F	12/15/08	ADDED SPACER	SWS	
D	4/9/07	GENERAL REVISIONS	SWS	
C	4/25/05	ANCHORS & PLASTICS	SWS	
B	3/1/05	FLORIDA CHANGES	SWS	
A	2/22/05	ADDED GLASS DETAIL	SWS	

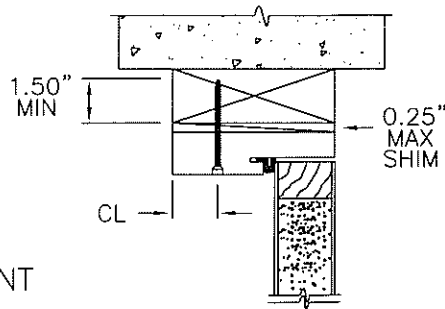
DATE: 2/11/05
SCALE: N.T.S.
DWG. BY: SWS
CHK. BY:
DRAWING NO.:
DWG-MA-FL0121-05
SHEET 1 OF 3



ATTACHMENT DETAIL

1. ANCHOR ANALYSIS FOR LOADING CONDITIONS PREPARED, SIGNED AND SEALED BY HAROLD E. RUPP, PE (FLORIDA #15935) WITH THE LOWEST (LEAST) FASTENER RATING FROM THE DIFFERENT FASTENERS BEING CONSIDERED FOR USE. JAMB, HEAD, AND THRESHOLD FASTENERS ANALYZED FOR THIS UNIT INCLUDE #10 WOOD SCREWS OR 3/16" TAPCONS. A PHYSICAL SHIM MUST BE PLACED IN SHIM SPACE AT EACH ANCHOR LOCATION.
2. THE WOOD SCREW SINGLE SHEAR DESIGN VALUES COME FROM ANSI/AF&PA NDA FOR SOUTHERN PINE LUMBER AND ACHIEVEMENT OF 1-1/2" MINIMUM EMBEDMENT. THE TAPCON MUST ACHIEVE MINIMUM EMBEDMENT OF 1-1/4".
3. WOOD BUCKS BY OTHERS MUST BE ANCHORED PROPERLY TO TRANSFER LOADS TO STRUCTURE.
4. MINIMUM DESIGN VALUE STRENGTH OF ANCHORS 171 LBS.

Certification No.: N1005930-R7
 Reviewed By: [Signature]
 Date Reviewed: 12/17/08



TYPICAL ANCHOR INSTALLATION
4-9/16" MIN JAMB

HARDWARE SCHEDULE

1.	KWIKSET MAXIMUM SECURITY SERIES GRADE 2 CYLINDRICAL AND DEADLOCK HARDWARE TO BE INSTALLED AT 10-1/2" CENTERLINE.
1a.	KWIKSET MAXIMUM SECURITY SERIES GRADE 2 CYLINDRICAL AND DEADLOCK HARDWARE TO BE INSTALLED AT 5-1/2" CENTERLINE MINIMUM WITH 8" GRADE 1 (ANSI/BHMA A156.16) SURFACE BOLTS INSTALLED ON LATCH SIDE OF ACTIVE DOOR PANEL - (1) AT TOP AND (1) AT BOTTOM.
2.	4" X 4" FULL MORTISE BUTT HINGES.

MASONITE INTERNATIONAL CORP.
 7300 REAMES RD.
 CHARLOTTE, NC 28216

PRODUCT: "EXTERIOR DOOR PRODUCT"
 8'0" FIBERGLASS OPAQUE DOUBLE DOOR UNIT
 PART OR ASSEMBLY: ANCHORING LOCATIONS & DETAILS

NO.	DATE	BY	REVISIONS
F	12/15/08	SWS	ADDED SPACER
D	4/9/07	SWS	GENERAL REVISIONS
C	4/25/05	SWS	ANCHORS & PLASTICS
B	3/1/05	SWS	FLORIDA CHANGES
A	2/22/05	SWS	ADDED GLASS DETAIL

DATE: 2/11/05
 SCALE: N.T.S.
 DWG. BY: SWS
 CHK. BY:
 DRAWING NO.:
 DWG-MA-FL0121-05
 SHEET 3 OF 3