



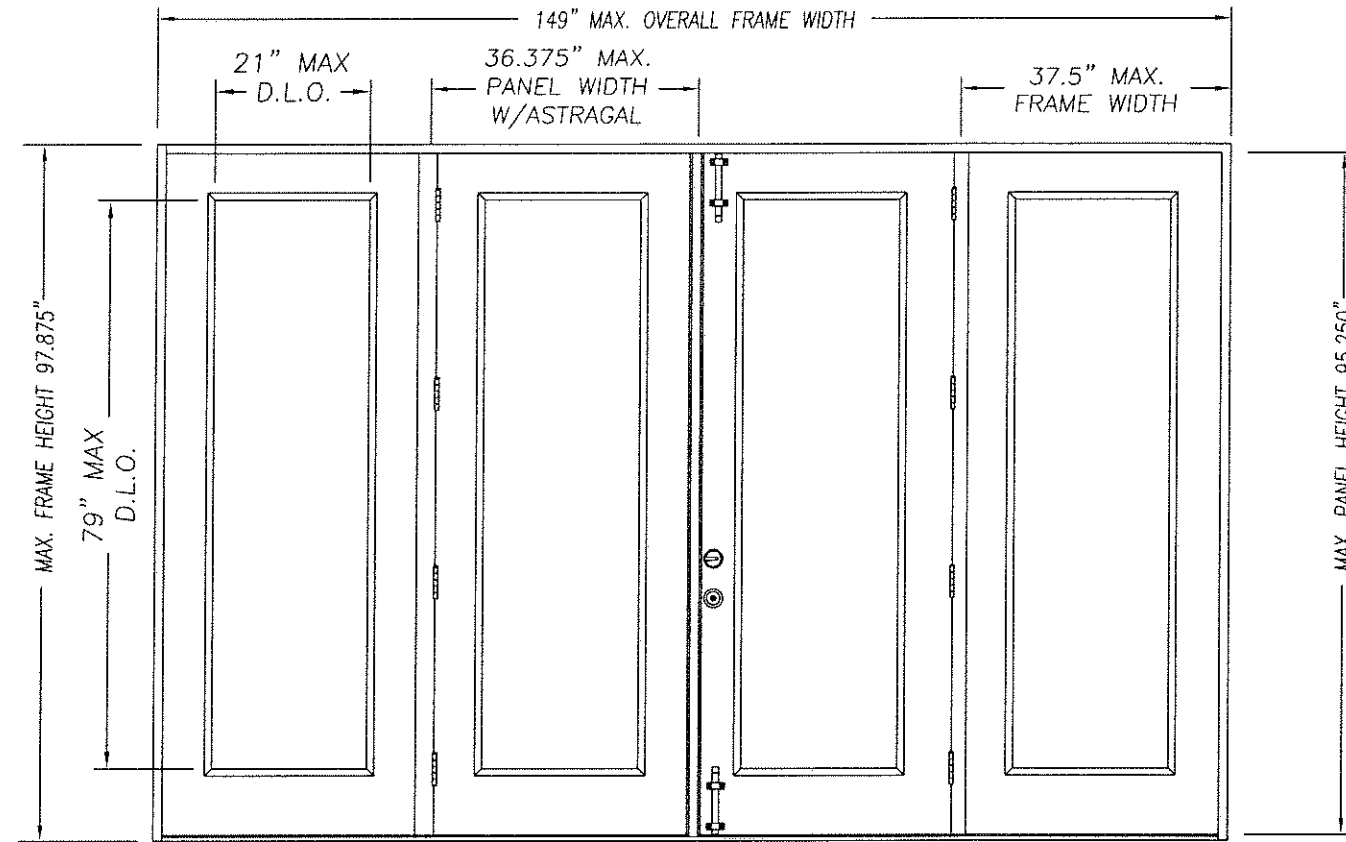
METAL-EDGE STEEL DOOR UNIT
8'-0" GLAZED DOUBLE DOOR WITH / WITHOUT SIDELITES

GENERAL NOTES

- EVALUATED FOR USE IN LOCATIONS ADHERING TO THE FLORIDA BUILDING CODE AND WHERE PRESSURE REQUIREMENTS AS DETERMINED BY ASCE 7, MINIMUM DESIGN LOADS FOR BUILDINGS AND OTHER STRUCTURES, DOES NOT EXCEED THE DESIGN PRESSURES LISTED.
- HURRICANE PROTECTIVE SYSTEM (SHUTTERS) IS NOT REQUIRED.
- IN THE HVHZ, FACTORY PRIMED DOORS MUST BE PAINTED IN ACCORDANCE WITH SECTION 2220 OF THE FBC.
- POLYURETHANE CORE FLAME SPREAD INDEX OF 50 AND SMOKE DEVELOPED INDEX OF 60 PER ASTM E84.
- PLASTICS TESTING OF LITE FRAME MATERIAL:

TEST DESCRIPTION	DESIGNATION	RESULT
SELF IGNITION TEMP	ASTM D1929	740 °F > 650 °F
RATE OF BURNING	ASTM D635	0.77 IN/MIN
SMOKE DENSITY	ASTM D2843	13.4%
TENSILE STRENGTH*	ASTM D638	7.50% DIFF

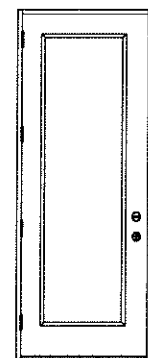
* COMPARATIVE TENSILE STRENGTH AFTER WEATHERING 4500 HOURS XENON ARC METHOD 1



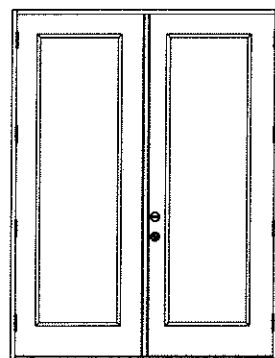
DOUBLE DOOR UNIT W/SIDELITES

Addendum to NAMI

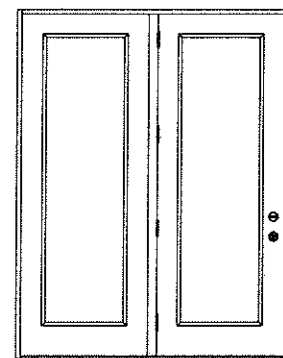
Certification No.: NI 068080
Reviewed By: [Signature]
Date Reviewed: 3/2/12



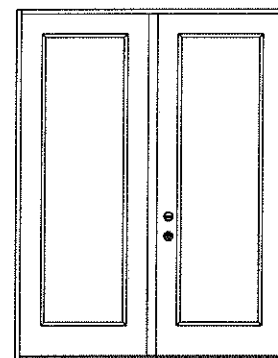
SINGLE DOOR UNIT



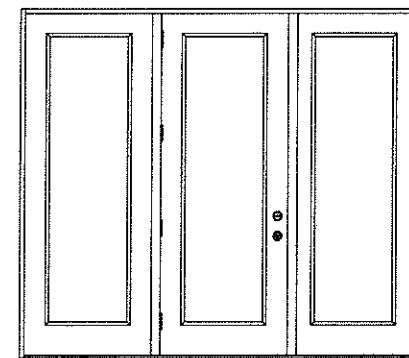
DOUBLE DOOR UNIT



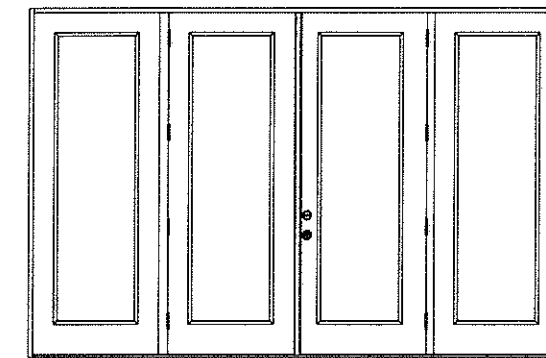
SINGLE DOOR UNIT WITH SIDELITE



SINGLE DOOR UNIT WITH SIDELITE



SINGLE DOOR UNIT W/SIDELITES



DOUBLE DOOR UNIT W/SIDELITES

TABLE OF CONTENTS

SHEET #	DESCRIPTION
1	TYPICAL ELEVATIONS & GENERAL NOTES
2	ANCHORING LOCATIONS & DETAILS
3	ANCHORING LOCATIONS & DETAILS

CONFIG	MAX WIDTH	DESIGN PRESSURE RATING					
		INSWING		OUTSWING		OUTSWING*	
		INSWING	OUTSWING	INSWING	OUTSWING	INSWING	OUTSWING
X	37.5"	+47.0 / -50.0	+50.0 / -50.0	+19.0 / -19.0	+40.0 / -40.0	+50.0 / -50.0	+50.0 / -50.0
XX	74"	+47.0 / -50.0	+50.0 / -50.0	+19.0 / -19.0	+40.0 / -40.0	+50.0 / -50.0	+50.0 / -50.0
OX or XO	75"	+47.0 / -50.0	+50.0 / -50.0	+19.0 / -19.0	+40.0 / -40.0	+50.0 / -50.0	+50.0 / -50.0
OXO	112.5"	+47.0 / -50.0	+50.0 / -50.0	+19.0 / -19.0	+40.0 / -40.0	+50.0 / -50.0	+50.0 / -50.0
OXXO	149"	+47.0 / -50.0	+50.0 / -50.0	+19.0 / -19.0	+40.0 / -40.0	+50.0 / -50.0	+50.0 / -50.0

* High Dam Threshold Design

Kt 1 Bth

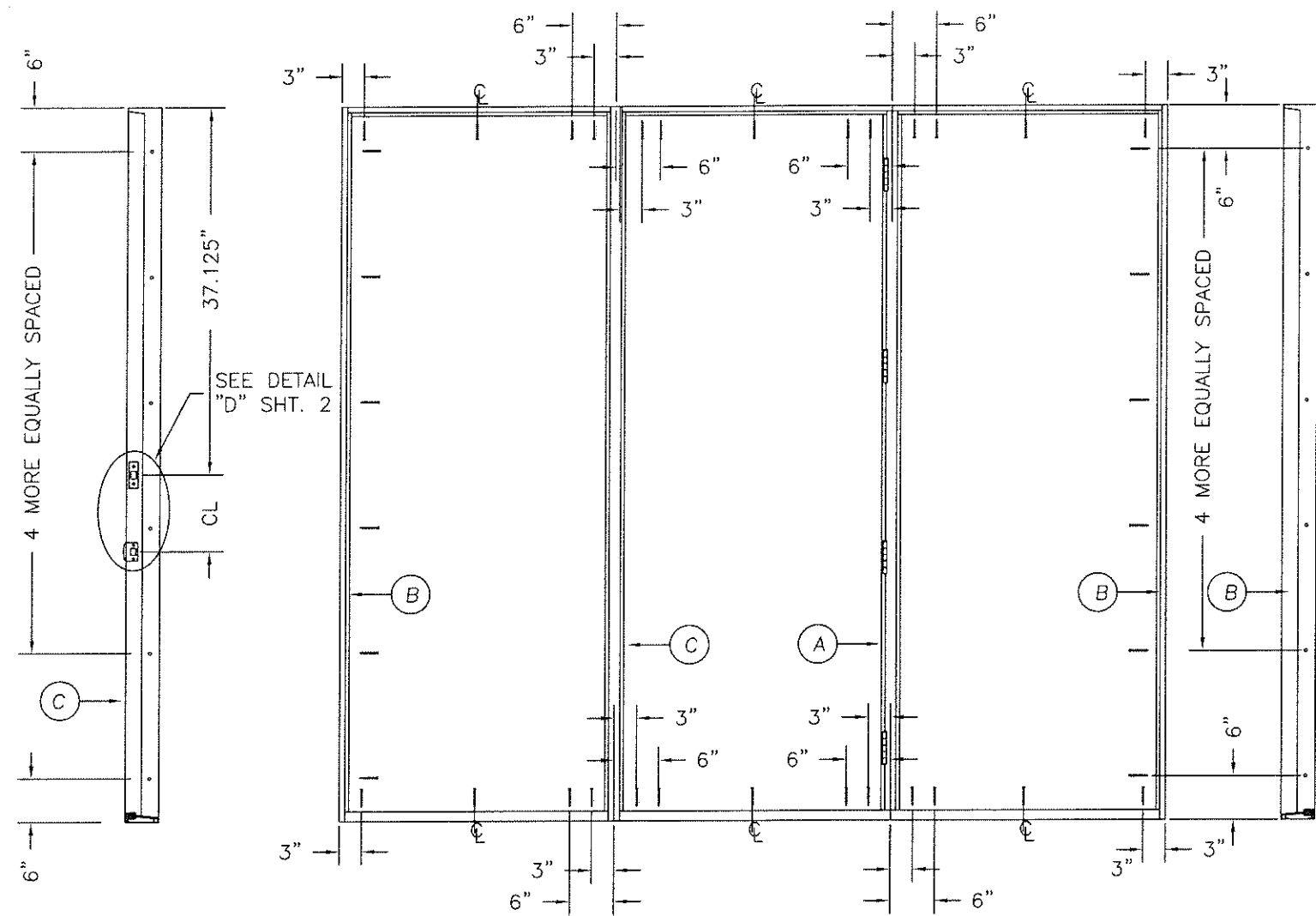
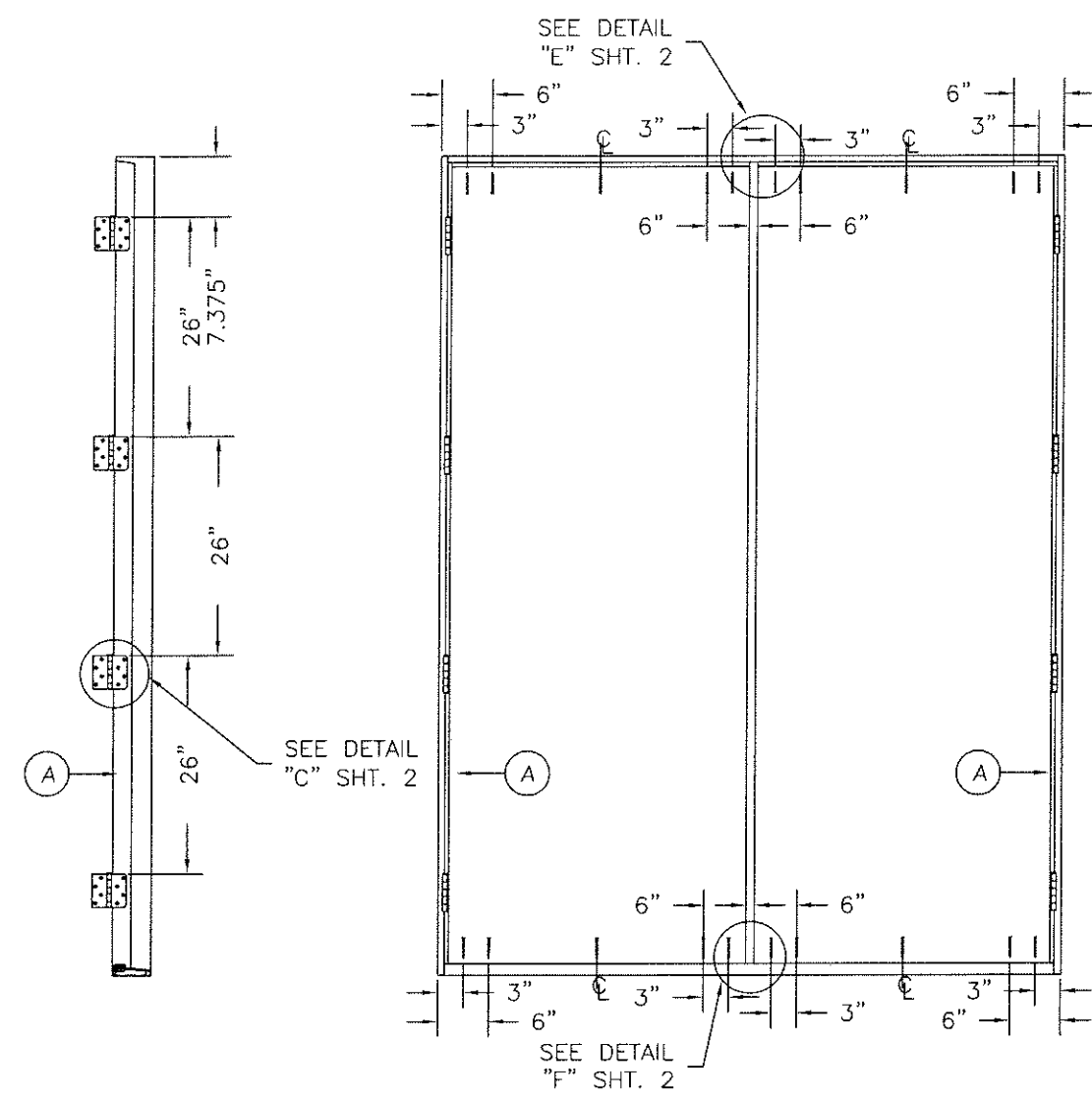
KURT BALTHAZOR
FLORIDA P.E.
#56533

MASONITE INTERNATIONAL CORP.
1955 POWIS RD.
WEST CHICAGO, IL 60185

PRODUCT: "EXTERIOR DOOR PRODUCT"
DOUBLE 8'0" GLAZED
METAL-EDGE STEEL DOOR
PART OR ASSEMBLY:
TYPICAL ELEVATIONS
& GENERAL NOTES

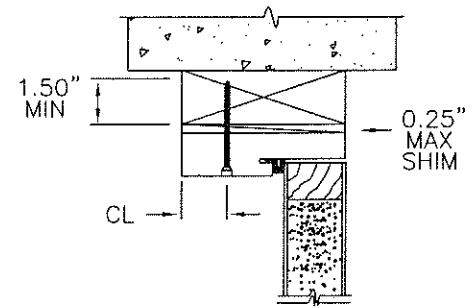
NO.	DATE	BY	REVISIONS

DATE: 2/8/08
SCALE: N.T.S.
DWG. BY: SWS
CHK. BY:
DRAWING NO.:
DWG-MA-FL0176-08
SHEET 1 OF 3



ATTACHMENT DETAIL

1. ANCHOR ANALYSIS FOR LOADING CONDITIONS PREPARED, SIGNED AND SEALED BY LUIS R. LOMAS, PE (FLORIDA #62514) WITH THE LOWEST (LEAST) FASTENER RATING FROM THE DIFFERENT FASTENERS BEING CONSIDERED FOR USE. JAMB, HEAD, AND THRESHOLD FASTENERS ANALYZED FOR THIS UNIT INCLUDE #10 WOOD SCREWS OR 3/16" TAPCONS. A PHYSICAL SHIM MUST BE PLACED IN SHIM SPACE AT EACH ANCHOR LOCATION. TAPCON EDGE DISTANCE MIN 2-1/2".
2. THE WOOD SCREW SINGLE SHEAR DESIGN VALUES COME FROM ANSI/AF&PA NDA FOR SOUTHERN PINE LUMBER AND ACHIEVEMENT OF 1-1/2" MINIMUM EMBEDMENT. THE TAPCON MUST ACHIEVE MINIMUM EMBEDMENT OF 1-1/4".
3. WOOD BUCKS BY OTHERS MUST BE ANCHORED PROPERLY TO TRANSFER LOADS TO STRUCTURE.
4. MINIMUM DESIGN VALUE STRENGTH OF ANCHORS 171 LBS.



TYPICAL ANCHOR INSTALLATION
 4-9/16" MIN JAMB

HARDWARE SCHEDULE

1. KWIKSET SERIES 400 GRADE 3 CYLINDRICAL LATCH AND SERIES 980 GRADE 1 DEADBOLT TO BE INSTALLED AT 5-1/2" CENTERLINE MINIMUM WITH 8" GRADE 1 (ANSI/BHMA A156.16) SURFACE BOLTS INSTALLED ON LATCH SIDE OF ACTIVE DOOR PANEL - (1) AT TOP AND (1) AT BOTTOM.
2. 4" X 4" FULL MORTISE BUTT HINGES.

Addendum to NAMI
 Certification No.: NI 068080
 Reviewed By: [Signature]
 Date Reviewed: 3/2/12

PRODUCT: "EXTERIOR DOOR PRODUCT" 8'0" STEEL GLAZED DOUBLE DOOR UNIT		PART OR ASSEMBLY: ANCHORING LOCATIONS & DETAILS	
DATE:	2/8/08	BY:	
SCALE:	N.T.S.	DATE:	
DWG. BY:	SWS	NO.:	
CHK. BY:		REVISIONS:	
DRAWING NO.:	DWG-MA-FL0176-08		
SHEET	3	OF	3